



technische import

Productinformatie



FRATELLI PETTINAROLI

BAFA.NL



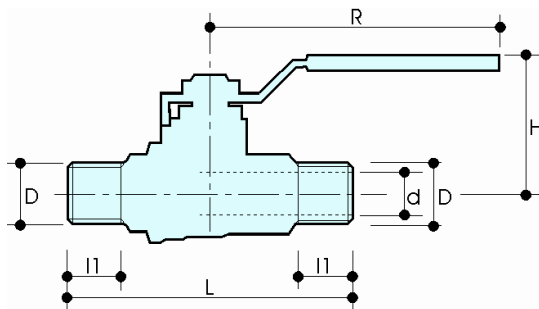
DESCRIPTION

51CE/2

M x M extra compact fullway ball valve.
Red steel lever.

Conform to EN 13828

DIMENSIONS



D	1/2"	3/4"	1"
d	15	20	25
H	39	49	52
l1	12	13	14
L	56	67.5	76.5
R	75	95	95
Accessory type	1	2	2
Weight (g)	170	300	450

All threads are conform to ISO 7 or ISO 228 standards

MATERIALS

Body	CW617N (DIN 50930 part.6) CuZn40Pb2
Ball	CW617N (DIN 50930 part.6) CuZn40Pb2 Chrome plated
Stem	CW614N (DIN 50930 part.6) CuZn39Pb3
Gland	CW614N (DIN 50930 part.6) CuZn39Pb3
Seat	2 x PTFE
O-rings	2 x FKM
Lever	Geomet coated steel. PVC grip with "Pad Printing"

CONNECTION VARIANTS

51CE	F X F, red steel lever
51CE/1	F X M, red steel lever
51CE/2	M X M, red steel lever

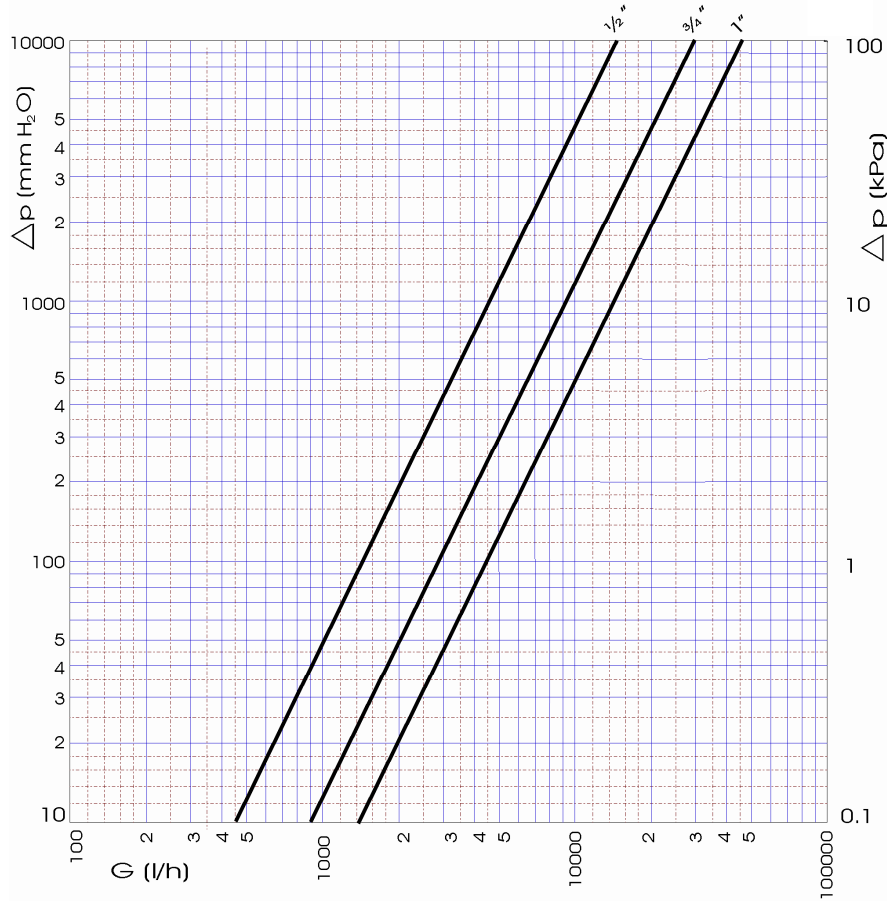
HANDLE VARIANTS

50CE	red aluminum lever
51CE	red steel lever
52CE	red butterfly handle
52CET	extended plastic lever

APPROVALS

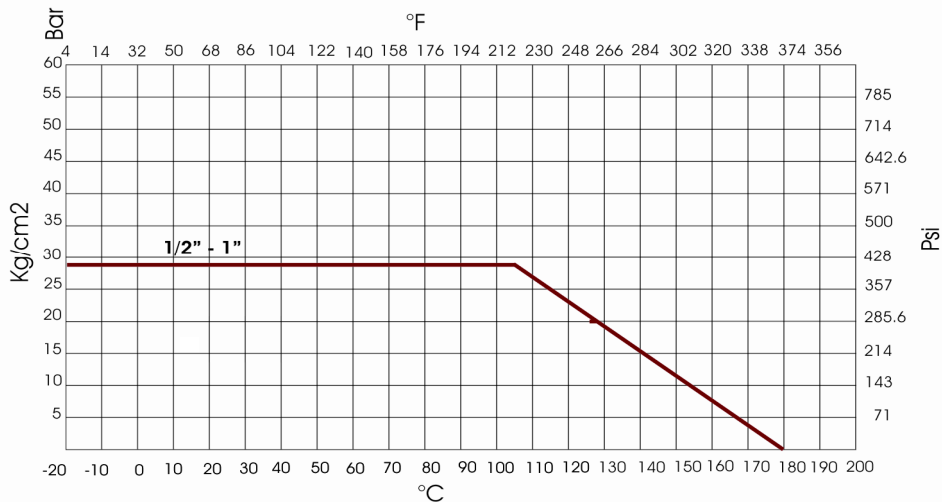


PRESSURE DROP DIAGRAM



Dim.	1/2"	3/4"	1"
Kv	14.5	30	45
PN	28	28	28

RECOMMENDED WORKING TEMPERATURE/ PRESSURE LIMIT



28 bar - 100°C - non shock (1/2" - 1")
10 bar - 150°C - non shock



technische import

Nijverheidsweg 11
7005 AS Doetinchem
T. +31 (0) 314-344342
E. info@bafa.nl

BAFA.NL