



**technische import**

# Productinformatie



FRATELLI PETTINAROLI

**BAFA.NL**



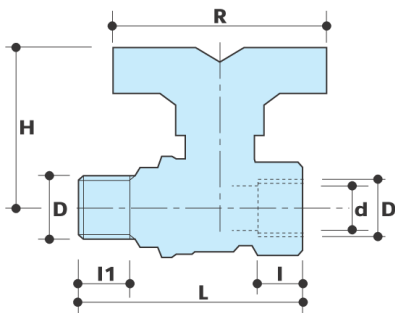
## DESCRIPTION

### 52CE/1

F x M extra compact fullway ball valve.  
Red butterfly handle.

Conform to **EN 13828**

## DIMENSIONS



D	1/2"	3/4"	1"
d	15	20	25
H	46	55.5	56
I	12	13	14
I1	12	13	14
L	54.7	66.5	76
R	58	65	65
Accessory type	1	2	2
Weight (g)	170	290	430

All threads are conform to ISO 7/1 or ISO 228 standards

## MATERIALS

<b>Body</b>	CW617N (DIN 50930 part.6) CuZn40Pb2
<b>Ball</b>	CW617N (DIN 50930 part.6) CuZn40Pb2 Chrome plated
<b>Stem</b>	CW614N (DIN 50930 part.6) CuZn39Pb3
<b>Gland</b>	CW614N (DIN 50930 part.6) CuZn39Pb3
<b>Seat</b>	2 x PTFE
<b>O-rings</b>	2 x FKM
<b>Lever</b>	Aluminum butterfly handle

## CONNECTION VARIANTS

52CE	F X F, red butterfly handle
52CE/1	F X M, red butterfly handle
52CE/2	M X M, red butterfly handle

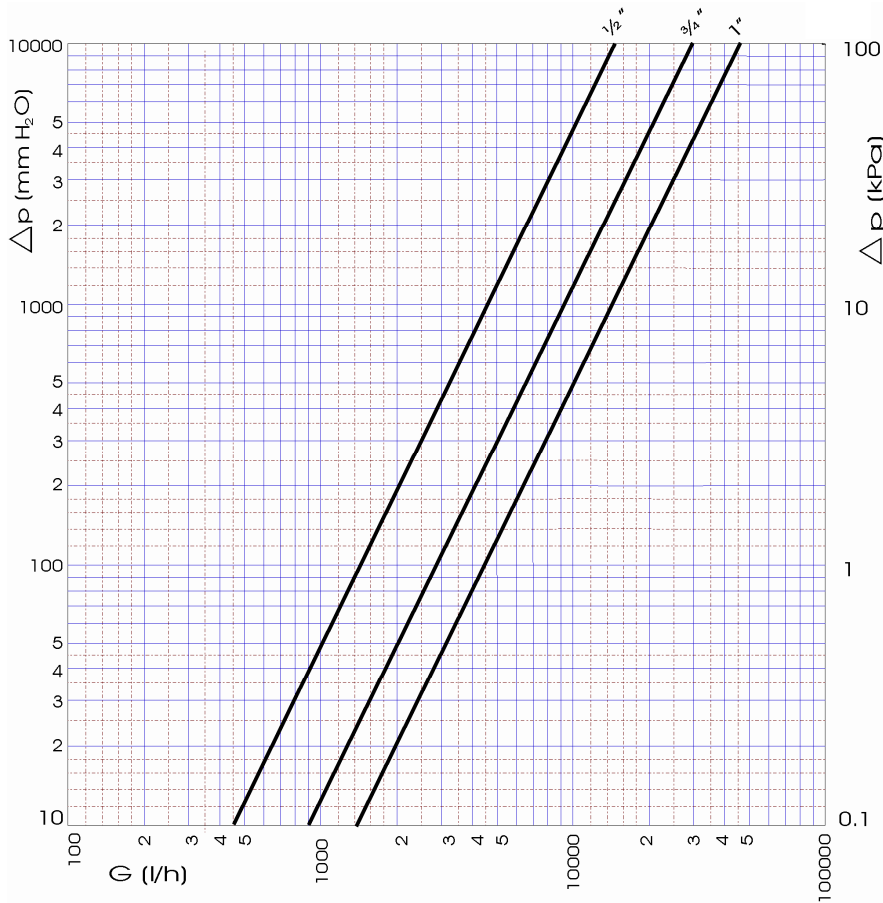
## HANDLE VARIANTS

50CE	red aluminum lever
51CE	red steel lever
52CE	red butterfly handle
52CET	extended plastic lever

## APPROVALS

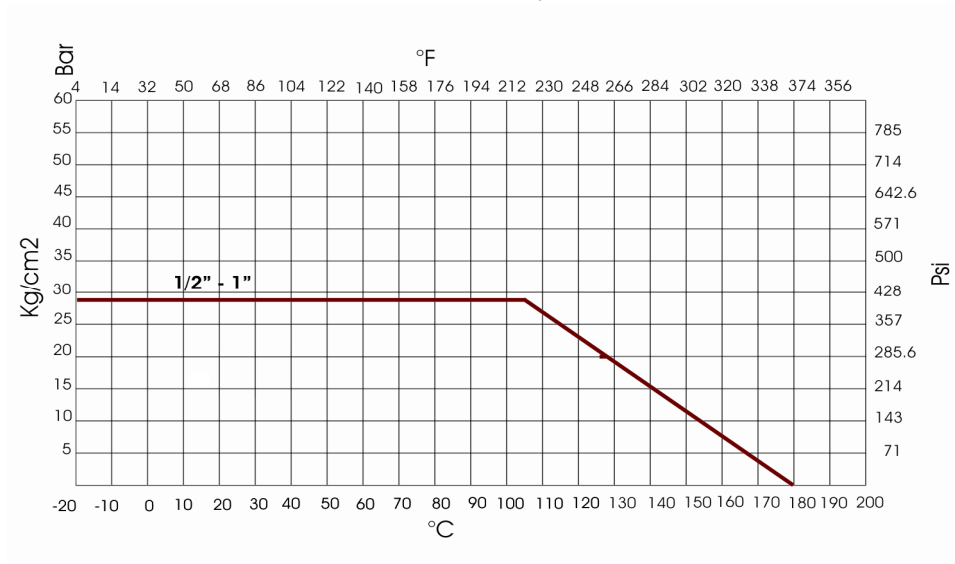


## PRESSURE DROP DIAGRAM



Dim.	1/2"	3/4"	1"
Kv	14.5	30	45
PN	28	28	28

## RECOMMENDED WORKING TEMPERATURE/ PRESSURE LIMIT



**28 bar - 100°C - non shock (1/2" - 1")**

**10 bar - 150°C - non shock**



# **technische import**

Nijverheidsweg 11  
7005 AS Doetinchem  
T. +31 (0)314-344342  
E. [info@bafa.nl](mailto:info@bafa.nl)

**BAFA.NL**