



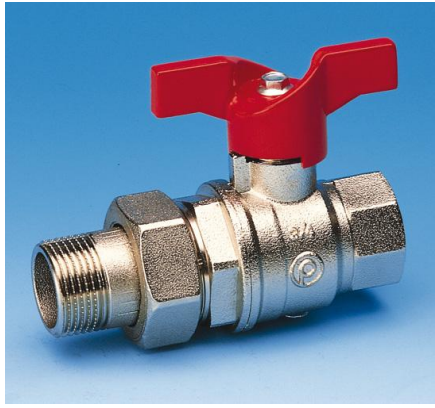
technische import

Productinformatie



FRATELLI PETTINAROLI

BAFA.NL



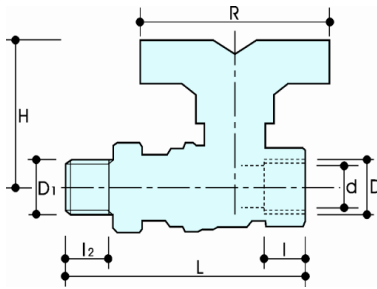
DESCRIPTION

52CE/3

Extra Compact fullway female ballvalve with tail.
Red aluminum butterfly handle.

Conform to EN 13828

DIMENSIONS



Dx D1	1/2"x 1/2"	3/4"x 3/4"	1"x 1"	1 1/4"x1 1/4"
d	15	20	25	32
H	46	55,5	56	71
I	11	13	14	16,5
I2	13	14	16	17,5
L	83	96	107,5	127
R	58	65	65	75
Acc.	1	2	2	3
g	260	446	680	1090

All threads are in accordance with ISO 7/1 or ISO 228

MATERIALS



Body

CuZn40Pb2 Cw617N (DIN 50930 part.6)
TEA finished

Ball

CuZn39Pb3 Cw614N (DIN 50930 part.6)
Diamond polished and TEA finished

Spindle

CuZn39Pb3 Cw614N (DIN 50930 part.6)

Stuffing box

CuZn39Pb3 Cw614N (DIN 50930 part.6)
Adjustable

Seats

PTFE

O-rings

2 x Viton®
PTFE

Handle

aluminum butterfly handle

TAIL VARIANTS

52CE F X F, red aluminum lever

52CE/2 M X M, red aluminum lever

HANDLE VARIANTS

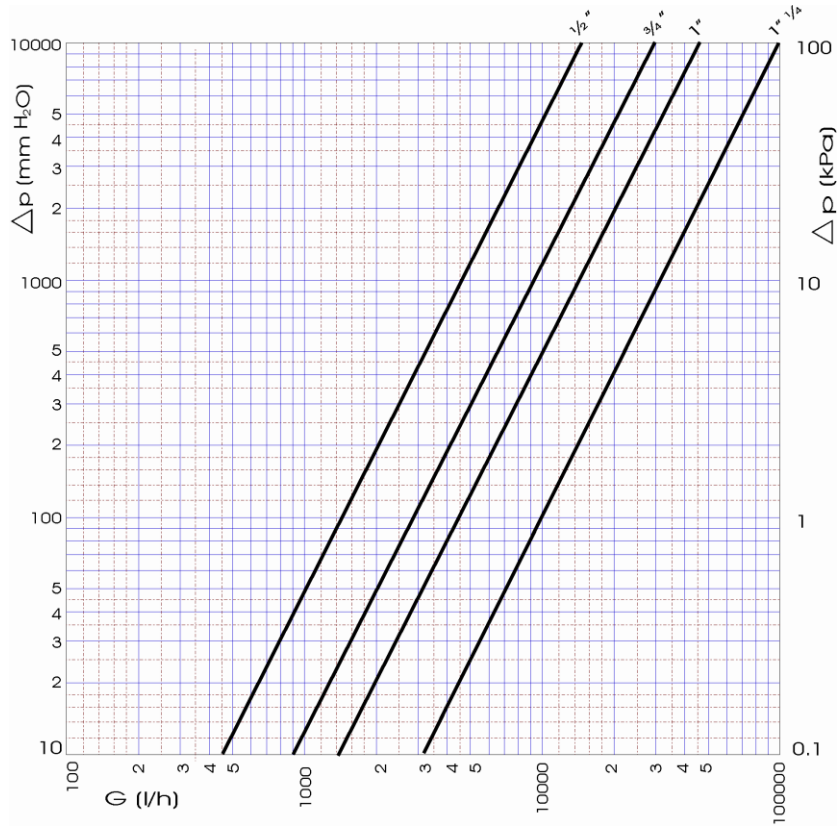
50CE F X F, red aluminum lever

51CE F X F, red steel lever

APPROVALS

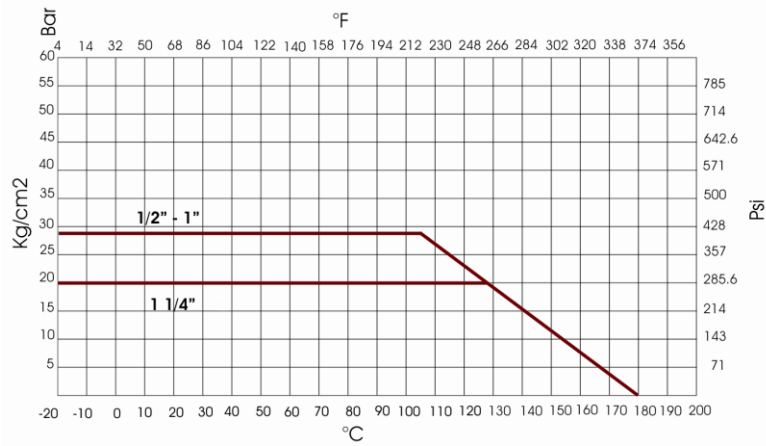


PRESSURE DROP DIAGRAM



Dim.	1/2"	3/4"	1"	1 1/4"
Kv	14.5	30	45	97
PN	28	28	28	20

RECOMMENDED WORKING TEMPERATURE/ PRESSURE LIMIT



28 bar - 100°C - non shock
 10 bar - 150°C - non shock



technische import

Nijverheidsweg 11
7005 AS Doetinchem
T. +31 (0)314-344342
E. info@bafa.nl

BAFA.NL