



technische import

Productinformatie



FRATELLI PETTINAROLI

BAFA.NL

DESCRIPTION



52F

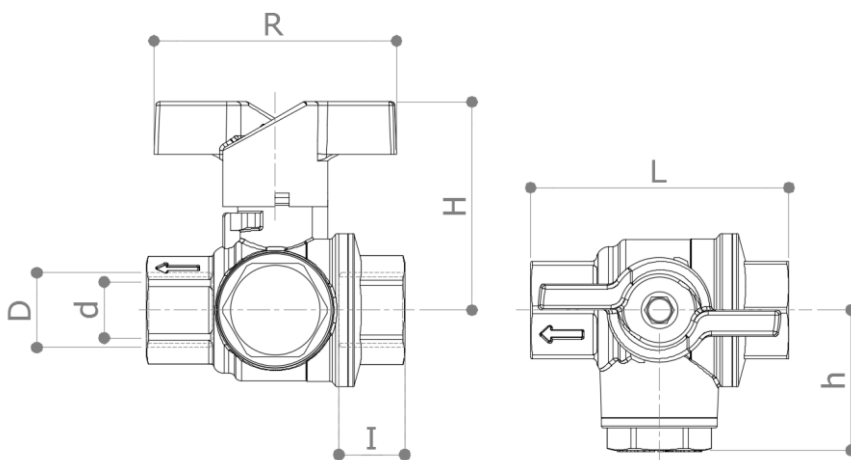
F x F heavy duty ballvalve **Filterball®** with integrated strainer FM28. Very easy to inspect and maintain.

Blue or red (**52FROS**) butterfly handle.

Made in DZR alloy.

Conform to **EN 13828** standard

DIMENSIONS



D	½"	¾"	1"
d	18	20	28.5
H	54	54	69.5
h	37	37	51
I	15	16	21.5
L	69	69	95
R	65	65	75
Weight [g]	410	425	1110

Dimensions in **mm**

All threads are conform to ISO 7 or ISO 228 standards

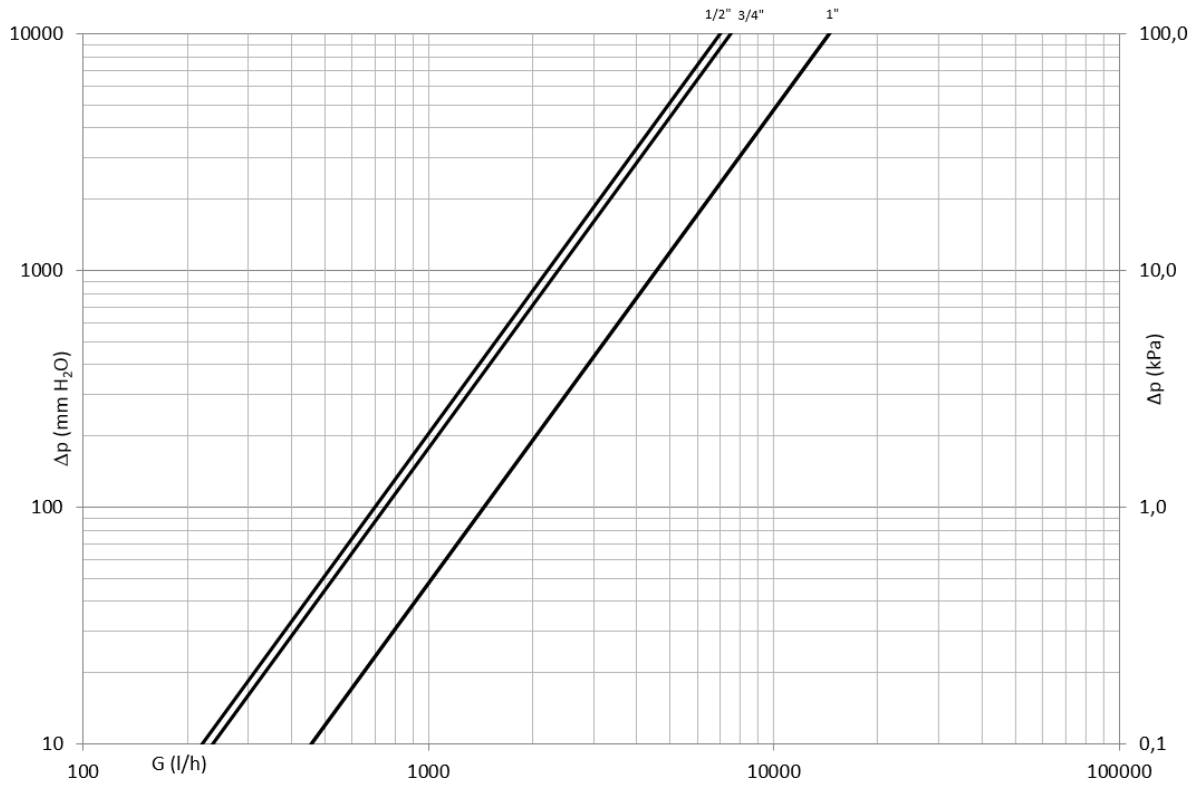
MATERIALS

Body	CW602N (EN 12167) CuZn36Pb2As
Ball	CW602N (EN 12167) CuZn36Pb2As Chrome plated
Stem	CW602N (EN 12167) CuZn36Pb2As
Stuffing box	CW614N (EN 12164) CuZn39Pb3 Adjustable
Strainer	Stainless steel
Seeger	Phosphoric bronze
Seat	2 x PTFE + 1 x PTFE on the stem
O-Rings	2 x FKM
Handle	Painted aluminum

APPROVALS



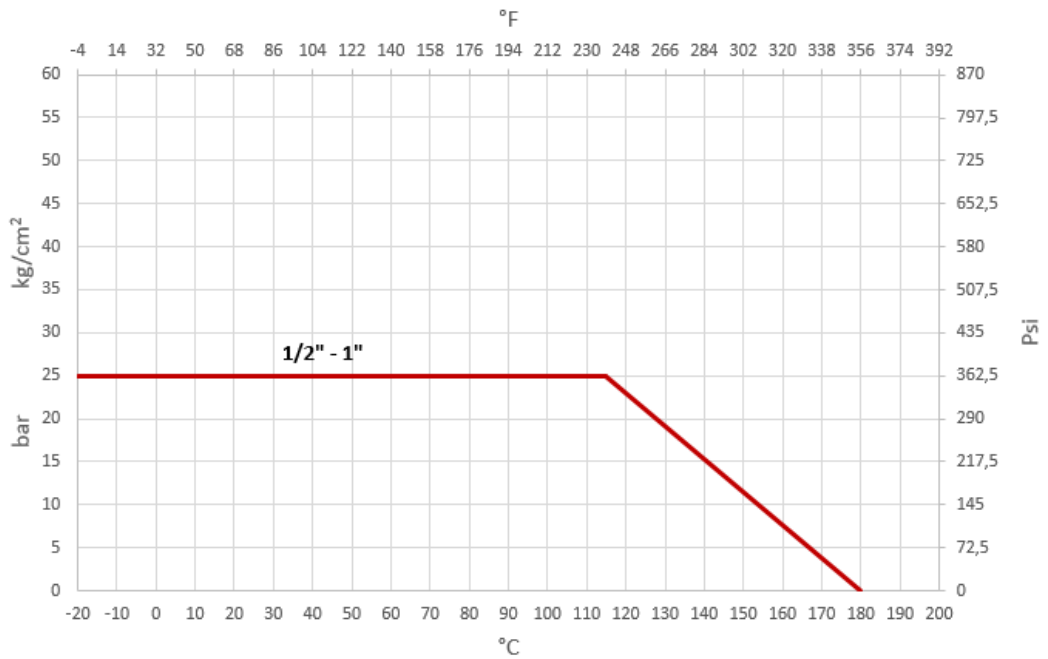
PRESSURE DROP DIAGRAM



Dim.	1/2"	3/4"	1"
Kv	7	7.5	14.5
PN	25	25	25

Kv values got by using FM28 strainer.

TEMPERATURE / PRESSURE DIAGRAM



RECOMMENDED WORKING TEMPERATURE/PRESSURE LIMITS

16 bar – 100°C – non shock

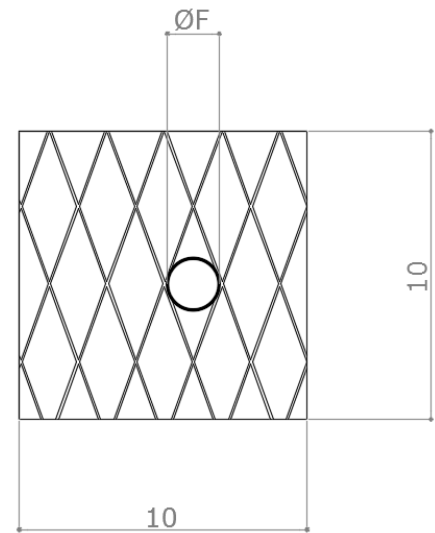
10 bar – 150°C – non shock

Max differential pressure: 10 bar

AVAILABLE STRAINERS

Here the table with all the available strainers:

Type	Mesh per linear 1"	Filtering capacity	Casing
FM020 FM020N*	20	∅ 800 µm (0,8 mm)	Single
FM028 FM028N*	28	∅ 700 µm (0,7 mm)	Single
FM040 FM040N*	40	∅ 300 µm (0,3 mm)	Single
FM060 FM060N*	60	∅ 230 µm (0,23 mm)	Double
FM080 FM080N*	80	∅ 180 µm (0,18 mm)	Double
FM100 FM100N*	100	∅ 150 µm (0,15 mm)	Double

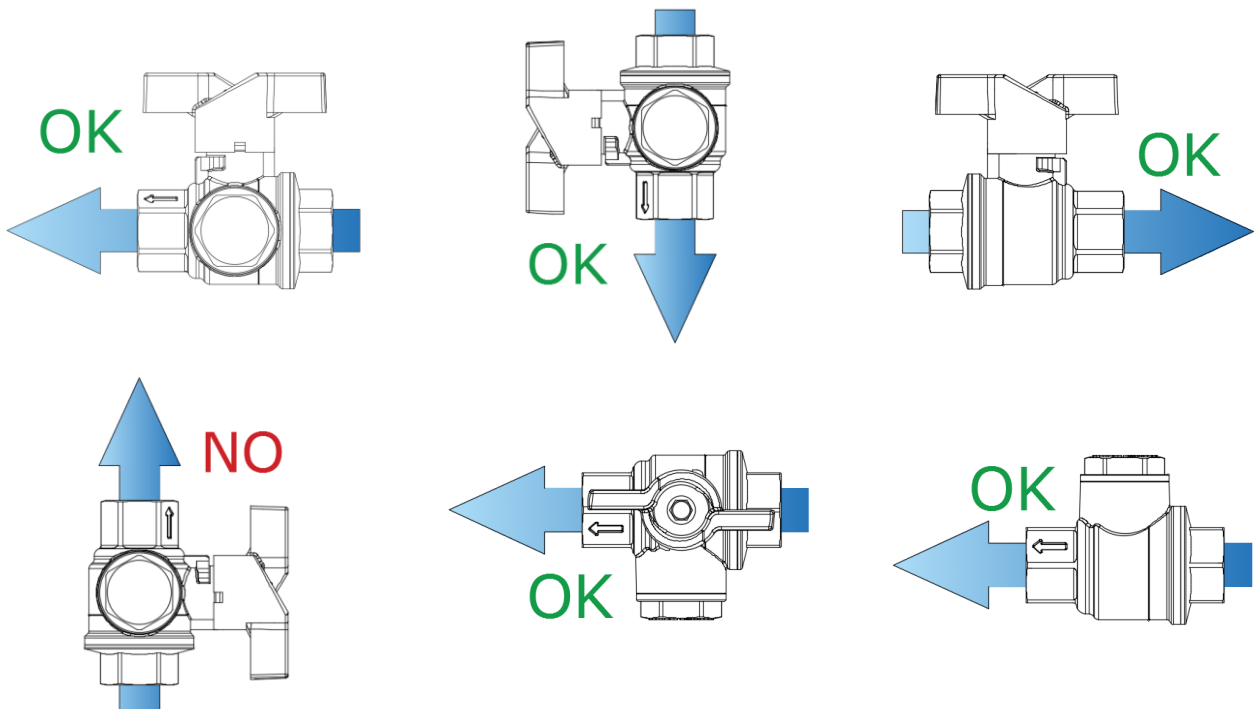


Pressure loss – Kv values

Type	½"	¾"	1"
FM020 FM020N*	7.4	7.8	15.3
FM028 FM028N*	7	7.5	14.5
FM040 FM040N*	5.2	5.4	12.1
FM060 FM060N*	4.4	4.6	11.4
FM080 FM080N*	4.8	5	11.4
FM100 FM100N*	4.4	4.6	9

* Compatible with Filterball 52F ½" – ¾" starting from production batch 1237

INSTALLATION

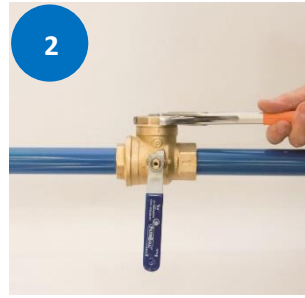


MAINTENANCE

In order to avoid an increasing of pressure losses due to scales, a yearly strainer cleaning is suggested. Please follow the instruction below to carry out the strainer maintenance:



- Close the valve



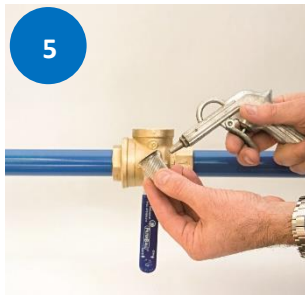
- Unscrew the inspection cap



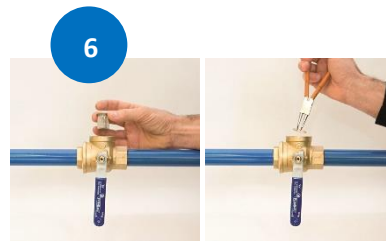
- Remove the Seeger ring



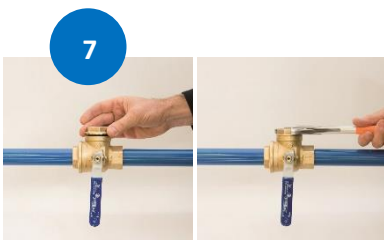
- Take the strainer out



- Clean or change the strainer



- Insert the strainer and lock it with Seeger ring



- Screw and close the cap



- Open the valve



technische import

Nijverheidsweg 11
7005 AS Doetinchem
T. +31 (0)314-344342
E. info@bafa.nl

BAFA.NL