



technische import

Productinformatie



A.U.K. MÜLLER GMBH & CO. KG

BAFA.NL

Product Information

Bi stable cartridge valve, DN 7

Series 050-B07-030/-060/-090



Patented
EP 0 825 370
US 5 996 965

Description

2/2-way solenoid cartridge servo controlled valve of DN 7 in bi stable version, to be used particularly in electronically controlled sanitary fittings.

The power consumption is minimised by the use of impulse control (pwm) to increase long term performance, durability and battery life.

The design outline had been reduced so far, that integration in appropriate components while using a minimum amount of space, is given.

Positive properties are extended due to the simple "screw in" version, which supports easy assembly, service and tests by the customer. The design of a separate valve seat by the customer is not to apply, as otherwise is needed, if a pilot valve will solely be used.

The rate of flow of the cartridge valve has been optimized in such a way, that the nominal diameter of DN 7 fulfils the standard requirements for sanitary tap ware.

By using our special valve bodys, an extended variety of application can be achieved.

Applications

- sanitary fittings
- irrigation systems
- industrial appliances
- pilot system for valves with a larger nominal diameter



A.u.K. Müller

Solenoid valves
Control valves
Special valves and systems

A. u. K. Müller GmbH & Co. KG
Dresdener Str. 162
D-40595 Düsseldorf/Germany

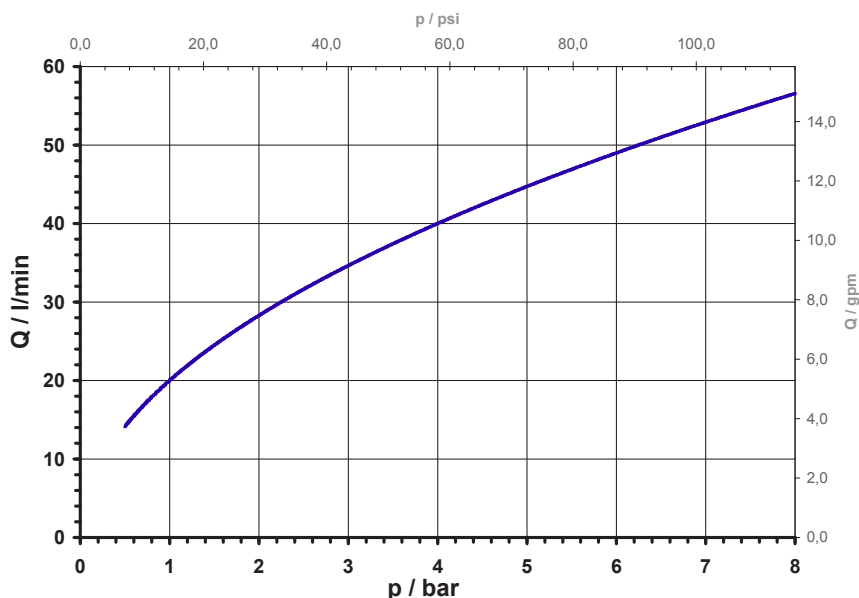
Tel.: +49(0)211-7391-0
Fax: +49(0)211-7391-281

e-mail: info@akmueller.de
Internet: www.akmueller.de

Characteristics

- servo-controlled
- pre tested functional unit
- long term performance capability
- internal triple pollution protection
- compact design
- optimized Cv-value for DN 7
- optimized water hammer characteristic by low noise emission according to EN 60730
- easy to assemble and service
- standard connection
- cylindrical design
- low power consumption
- any fitting position
- suitable for spray and jet water
- high operating safety through the use of high quality material and 100% final testing of the products

typical performance curve



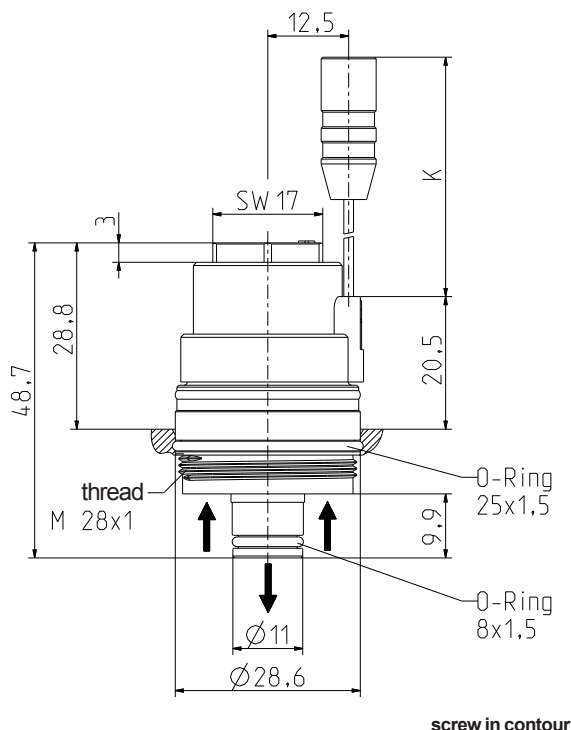
Product Information

Bi stable cartridge valve, DN 7



A.u.K. Müller

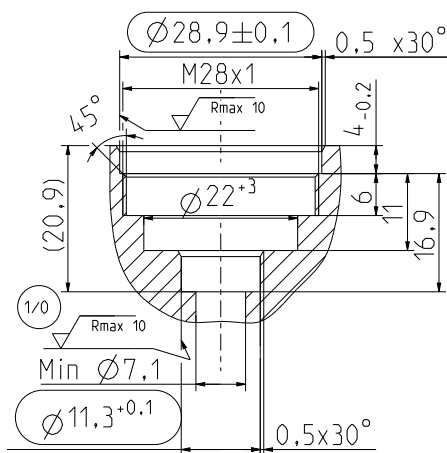
Series 050-B07-030/-060/-090



screw in contour

Materials

| | |
|-----------------------|---|
| Valve body | PEI |
| Plunger guide | stainless steel |
| Plunger | stainless steel |
| Membrane and sealings | EPDM NBR (on request) VMQ (on request) |
| Coil | 1.0338 "pot"-bracket |
| Filter | stainless steel (in inlet) |
| Certification | NSF, WRAS materials in contact with potable water are physiological harmless |

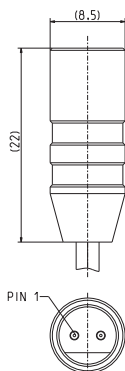


Technical Data

| | | |
|-------------------|---|---|
| Type | 2/2-way-cartridge valve | |
| Construction | screw-in, servo controlled | |
| Function | bi stable, pulse controlled | |
| Connection | thread M28 x 1 | |
| Fitting position | any | |
| Media | cold and heated potable water and physically and chemically similar media | |
| T-Medium | 5 - 70 | °C. |
| T-Ambient | 5 - 60 | °C |
| DN | 7 | mm |
| p-Operating | 0,5 - 8,0 | bar |
| Cv-value | 20 | l/min (with Silencer Qmax 20 l/min patented EP 0 999 392) |
| pressure surge | according to EN 60730 | |
| Coil type | MS.033 | |
| Nominal voltage | 3 6 9 | V DC V DC V DC |
| | special voltage on request | |
| Operating voltage | 2,2 - 3,3 V DC open/close 4 - 6 V DC open/close 6 - 9 V DC open/close at T-Ambient: 25°C | |
| Pulse shape/-time | | |
| Nominal power | 0,5 - 1,2 W | |
| Protection Type | IP 65 | higher IP-classes on request |
| Insulation class | F | according to EN 60730 |

Options

| Connection type | K - standard cable length |
|--------------------------|---------------------------|
| with leads and connector | 100 mm |
| with leads | 120 mm |
| connector | on request |



Male connector

Polarity of connector:
strand color RED Pin 1
strand color BLACK
or BLUE

PLUS(+) pulse to open
MINUS(-)



technische import

Nijverheidsweg 11
7005 AS Doetinchem
T. +31 (0) 314-344342
E. info@bafa.nl

BAFA.NL