



technische import

Productinformatie



A.U.K. MÜLLER GMBH & CO. KG

BAFA.NL

Product Information

Float valve, DN 10



A.u.K. Müller

Steuerventile et vannes
Commandes à contrôle
Special valves and systems

A.K. Müller GmbH & Co. KG
Dresdene Straße 162 GLOIS
D-40599 Düsseldorf
F-77600 BUSSY SAINT MARTIN
Tel.: +39 (0)21 6-7 32198 14
Fax: +39 (0)21 6-7 32198 12

e-mail: info@akmueller.de
Internet: www.akmueller.de

Series 21.010.115



Characteristics

- proportional behaviour (flow depends on position of float lever)
- servo-controlled
- operation largely independent from inlet pressure
- easy to assemble and service
- compact design
- suitable for heated water up to 60 °C, with optional stainless steel floater up to 90 °C
- floater adjustable on thread rod
- thread rod can be shortened at predetermined breaking points
- different lever lengths available
- high operating safety through the use of high quality materials and 100% final testing of the products

Applications

- tank filling
- high pressure cleaning devices (system separation according to EN 1717)
- washing systems
- irrigation systems
- ice machines
- industrial appliances

Description

Servo-controlled valve nominal diameter DN 10, which closes by means of buoyancy of a floater to control level in tanks

If liquid is drained from the tank, the float valve refills automatically and closes when the maximum level has been reached.

While water level and floater rises, the flow into the tank is throttled proportional to the levers position.

An overflow of small tanks will be prevented during the initial filling.

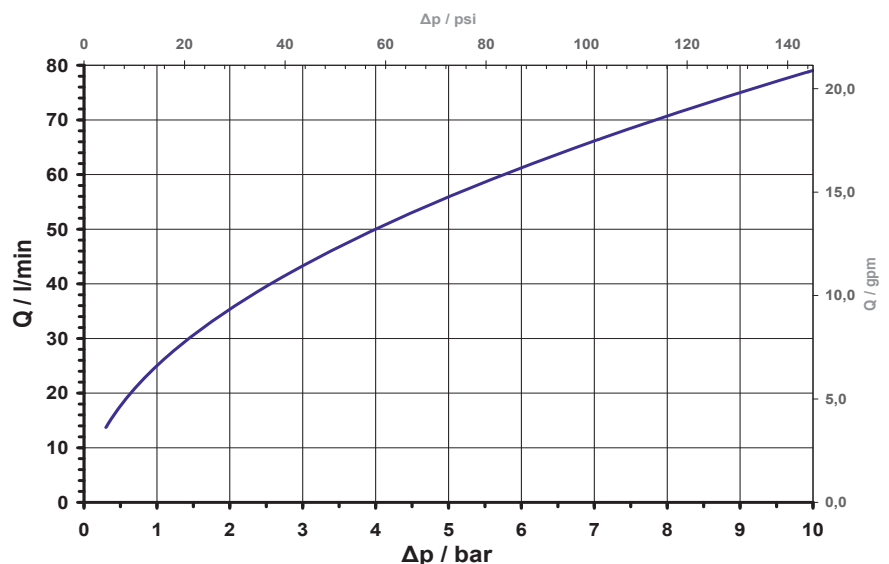
Valves of this design are single chamber valves with the inlet ninety degrees to the outlet.

The valve, having a glass fibre reinforced polyamid body and can be manufactured with various connections and is suitable up to 60 °C by using a PE-floater. For heated water up to max. 90 °C a stainless steel float ball is available on request.

Available approvals

- KTW/W270
- WRAS
- Others on request

typical performance curve



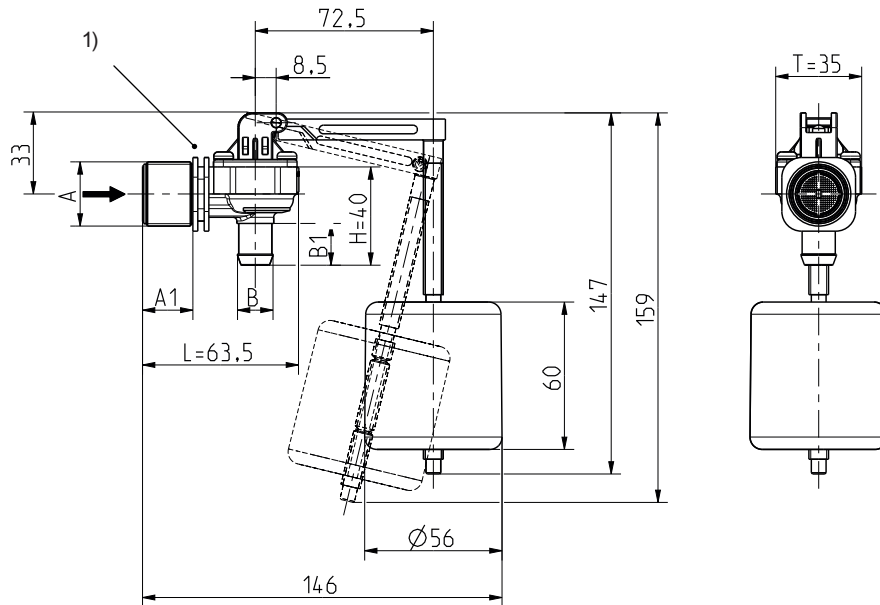
Product Information

Float valve, DN 10



A.u.K. Müller

Series 21.010.115



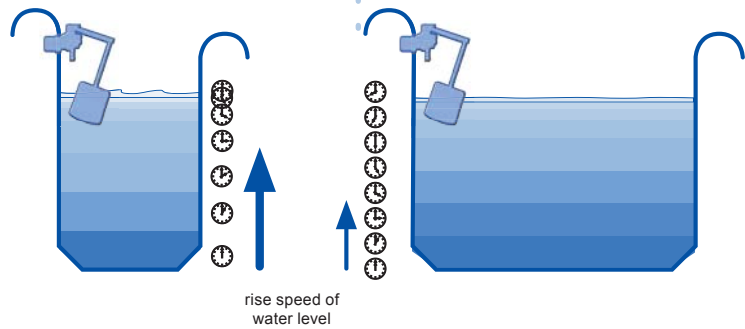
1) Fixing groove

Technical Data

Type	float valve	
Construction	2/2-way single chamber valve inlet ninety degree to the outlet, servo-controlled	
Function	closed by buoyancy of float	
Fitting position	float pointing downwards	
Media	cold and heated potable water and physically and chemically similar media	
T-Medium	30 60 90	°C max. polystyrene °C max. PE °C max. stainless steel
T-Ambient	as per T-Medium	
DN	10	mm
p-Operating	0,3 - 10	bar
Cv-value	25	l/min
Flow regulator	on request	
Float cylinder	adjustable position	

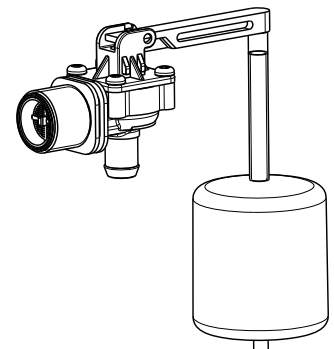
Materials

Valve body	PA 66 glass fibre reinforced PA 6/6 (on request)
Metal parts in medium	stainless steel
Membrane and sealings	EPDM
Float cylinder	PE-foam polystyrene (on request) stainless steel 1.4301 (on request)
Float lever	POM
Filter	POM (in inlet) stainless steel (on request)



Options

Material	Inlet		Outlet		
	Ø A	A1	Ø B	B1	
PA 66	G 3/4	20,0	14,5 nozzle	17,0	
PA 66	G 3/4	20,0	11,5 nozzle	16,0	
PA 6/6	G 3/4	20,0	14,5 nozzle	17,0	
PPE grey	G 3/4	20,0	14,5 nozzle	17,0	on request
PPE black	.75-11,5 NH	20,0	10,0 nozzle	16,0	on request
PEI	G 3/4	20,0	14,5 nozzle	17,0	on request



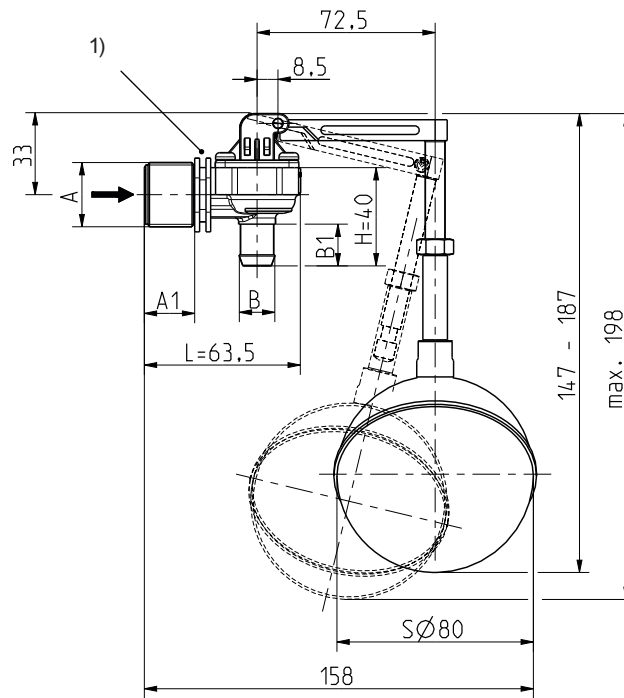
Product Information

Float valve, DN 10



A.u.K. Müller

Series 21.010.115



1) Fixing groove

Options

Material	Inlet		Outlet		
	Ø A	A1	Ø B	B1	
PA 66	G 3/4	20,0	14,5 nozzle	17,0	
PA 66	G 3/4	20,0	11,5 nozzle	16,0	on request
PA 6/6	G 3/4	20,0	14,5 nozzle	17,0	on request
PPE grey	G 3/4	20,0	14,5 nozzle	17,0	on request
PPE black	.75-11,5 NH	20,0	10,0 nozzle	16,0	on request
PEI	G 3/4	20,0	14,5 nozzle	17,0	on request



technische import

Nijverheidsweg 11
7005 AS Doetinchem
T. +31 (0) 314-344342
E. info@bafa.nl

BAFA.NL