



**technische import**

# Productinformatie



**A.U.K. MÜLLER GMBH & CO. KG**

**BAFA.NL**

# Flow regulator *Product Information*



**A.u.K. Müller**

Solenoid valves  
Control valves  
Special valves and systems

A.u.K. Müller GmbH & Co. KG  
Dresdener Str. 162  
D-40595 Düsseldorf/Germany

Tel.: +49 211 7391-0  
Fax: +49 211 7391-281

e-mail: [info@akmueller.de](mailto:info@akmueller.de)  
Internet: [www.akmueller.de](http://www.akmueller.de)

## Series MR

**MR04**  Tm: 65 °C (149 °F) max.

**MR05**  Tm: 65 °C (149 °F) max.

**MR06**  Tm: 65 °C (149 °F) max.

**MR07**  Tm: 65 °C (149 °F) max.

**MR12**  Tm: 90 °C (194 °F) max.

**MR19**  Tm: 98 °C (208 °F) max.

## Characteristics

- reduced water consumption
- constant flow rate
- reduced decrease of pressure in water conduits used by several consumers
- compensation of pressure surge

## Applications

- solenoid valves
- sanitary faucets
- instantaneous water heaters
- vending machines
- eye wash

## Description

Flow regulators maintain a defined flow independent from the supplies pressure. They are recommended to ensure a uniform distribution of water also in case of pressure fluctuations.

Pressure differences might be caused by level differences in multistorey buildings as well as if showers are taken simultaneously e.g. in commercial shower applications.

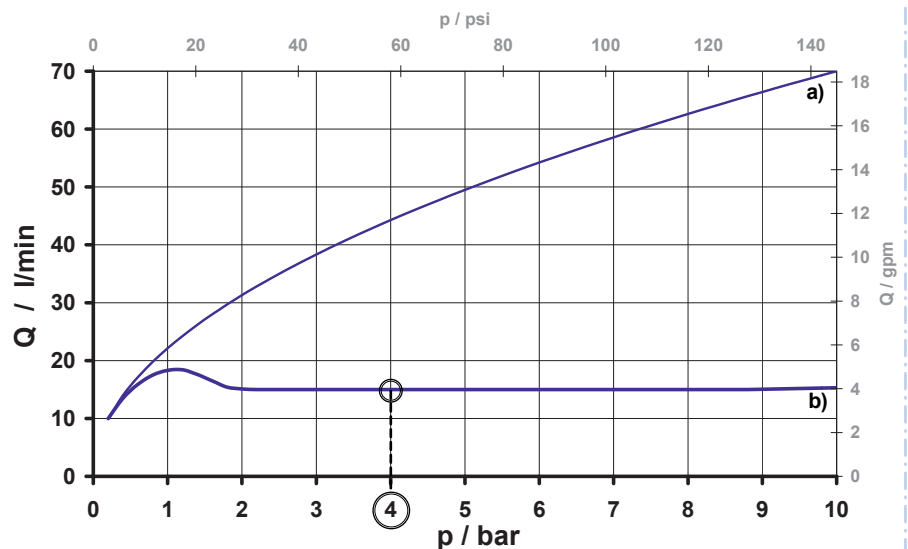
Flow regulators are usually installed directly into the inlet of faucets, flow heaters, solenoid valves, or similar. Depending on the valves design, they can be placed in the inlet, in the valve seat or in the outlet nozzle.

In a lot of applications flow limitations are already standard (e.g. 6 l/min or 8 l/min for faucets).

In addition to the constant water supply, the user saves water while keeping the accustomed comfort using washstand or shower.

typical performance curve

a) without flow regulator  
b) with flow regulator  
nominal flow rate defined at 4 bar



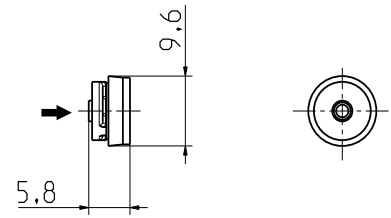


### MR 12

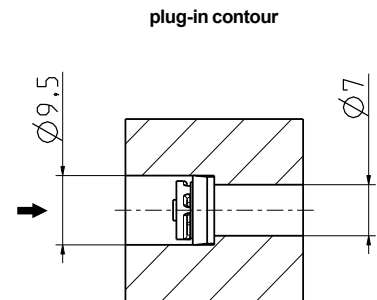
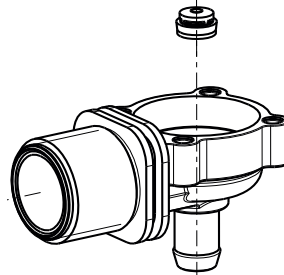
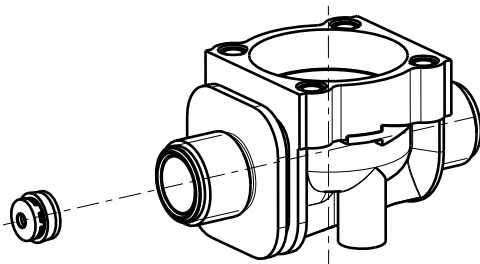
Ø 9,5 mm (for G 3/8 and G 1/2 valve inlet / angled valve with seat DN 10 / plug-in contour)

star-shaped regulating element: PA 6/6  
regulating element / elastomer: NBR or FKM\*

p-operating: 1 - 10 bar  
T-medium: 90 °C max.



nominal flow rate at 4 bar				inlet side view outlet
Q [l/min]	Q [USgal/min]	tolerance	Id.-No.	
4,0	1,06	± 15%	008926*	
5,0	1,32	± 20%	008079	
5,0	1,32	± 20%	008673*	





# **technische import**

Nijverheidsweg 11  
7005 AS Doetinchem  
T. +31 (0) 314-344342  
E. [info@bafa.nl](mailto:info@bafa.nl)

**BAFA.NL**