



**technische import**

# Productinformatie



**A.U.K. MÜLLER GMBH & CO. KG**

**BAFA.NL**

# Manifolds DN 17/DN 13 and Nozzles

# Product Information



## A. u. K. Müller

Solenoid valves  
Control valves  
Special valves and systems

A. u. K. Müller GmbH & Co. KG  
Dresdener Str. 162  
D-40595 Düsseldorf/Germany

Tel.: +49(0)211-7391-0  
Fax: +49(0)211-7391-281

e-mail: [info@akmueller.de](mailto:info@akmueller.de)  
Internet: [www.akmueller.de](http://www.akmueller.de)

### Series CF-System



CF-17: DN 17

### Characteristics

- Water distribution and merge of medium paths
- Applicable for hot water
- Easy installation due to manually releasable swivel nut
- Long term performance capability
- Variants with international approvals
- Optional with strainer, flow regulator or check valves

### Applications

- hot / cold drink dispensers
- industrial appliances
- cleaning systems
- washing machines
- dish washers
- agricultural implements

### Description

Manifolds with nominal widths of DN 17 / DN 13 and nozzles, made from polyamide, for flexible realization of water paths.

Whether you build the components into a new design or retrofit it into existing equipment, sufficient installation space assumed, it provides a simple method of adding new media paths or connection possibilities for components such as valves or push-fit connectors.

The manifolds with three or four connectors are ideally suitable for virtually any type of water distribution or merger. The standard connection thread sizes allow integration into numerous applications. Installation is made easy by manually releasable swivel nuts.

The internal diameter of the manifolds with either  $\varnothing$  17 mm or 13 mm ensures a high throughput, whilst maintaining minimal pressure losses. The outlet nozzles are available with different spouts, with and without a moulded contour.

CF-13: DN 13

CF-H



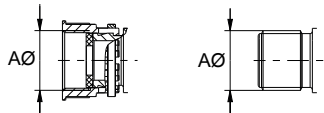


## CF-17: Manifolds DN 17

### Technical Data

Type	Manifold	
Fitting position	any	
Media	cold and heated potable water and physically and chemically similar media	
T-Medium	90 (194)	°C max. (°F max.)
DN	17	mm
p-Operating	0 - 10 (0 - 145)	bar (psi)
Burst pressure	65 (943)	bar (psi)

### Options



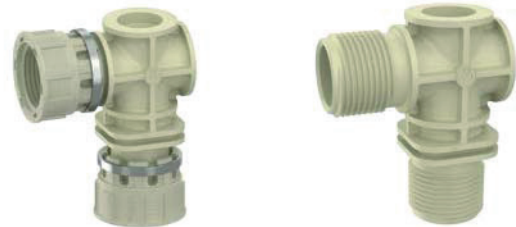
	Ø A
Swivel nut	G 3/4
	.75-11.5 NH
Male thread	G 3/4
	.75-11.5 NH on request

Other connectors on request

### Materials

Body	PA 6/6 glass fibre reinforced
Sealings	EPDM





The materials in contact with media have international drinking water approvals for hot potable water.





CF-17 L: Angular piece, manifolds DN17	ID
	<p data-bbox="1382 651 1474 678">009365</p>
	<p data-bbox="1382 1227 1474 1254">009152</p>
	<p data-bbox="1382 1803 1474 1830">010151</p>



CF-17 T: T-piece, manifolds DN17	ID															
	 <p style="text-align: center;"><b>009364</b></p>															
	 <p style="text-align: center;"><b>009153</b></p>															
	 <table border="1" style="margin-left: auto; margin-right: auto;"> <tr> <td style="text-align: center;">A</td> <td style="text-align: center;">B</td> <td style="text-align: center;">C</td> </tr> <tr> <td colspan="3" style="text-align: center;">G 3/4</td> </tr> <tr> <td colspan="3" style="text-align: center;"><b>010341</b></td> </tr> <tr> <td style="text-align: center;">A</td> <td style="text-align: center;">B</td> <td style="text-align: center;">C</td> </tr> <tr> <td colspan="3" style="text-align: center;">.75 - 11.5 NH</td> </tr> </table>	A	B	C	G 3/4			<b>010341</b>			A	B	C	.75 - 11.5 NH		
A	B	C														
G 3/4																
<b>010341</b>																
A	B	C														
.75 - 11.5 NH																
	 <p style="text-align: center;"><b>009643</b></p>															



CF-17 T: T-piece, manifolds DN17	ID	
		<p>10433 on request</p>
CF-17 C: Cross-piece, manifolds DN17	ID	
		<p>009366</p>
		<p>009151</p>



CF-17 2MFC: Dual distribution, manifolds DNI7	ID
	<p style="font-weight: bold; font-size: 1.2em;">009367</p>

Options						
Connection					Length	
Ø A	A1	Ø B	B1	E	L	ID
G 3/4 swivel nut	10,5	G 3/4 swivel nut	10,5	36	155	on request
				53	172	on request
				75	194	009367
.75-11.5 NH	10,5	.75-11.5 NH	10,5	36	155	on request
				53	172	on request
				75	194	on request

Depending on the pitch the manifolds are for example compatible to the following A. u. K. Müller servo-controlled valve series:

Pitch	Valve	
E	Series	Note
36	1.010	One-chamber valve (without flange)
	1.013	One-chamber valve (without flange)
53	1.017	One-chamber valve (without flange)
75	1.010	1-, 2-, 3-, 4- chamber valve (with flange)
	1.013	1-, 2- chamber valve (with flange)
	1.017	One-chamber valve (with flange)
	1.021	One-chamber valve (with flange)



CF-17 2MFC: Dual distribution, manifolds DN17	ID
	<p style="font-weight: bold; font-size: 1.2em;">009373</p>

Options						
Connection	A1	Ø B	B1	E	Length L	ID
G 3/4 swivel nu	10,5	G 3/4 male	20,5	36	155	on request
				53	172	on request
				75	194	09373
.75-11.5 NH	10,5	.75-11.5 NH	10,5	36	155	on request
				53	172	on request
				75	194	on request

Depending on the pitch the manifolds are for example compatible to the following A. u. K. Müller servo-controlled valve series:

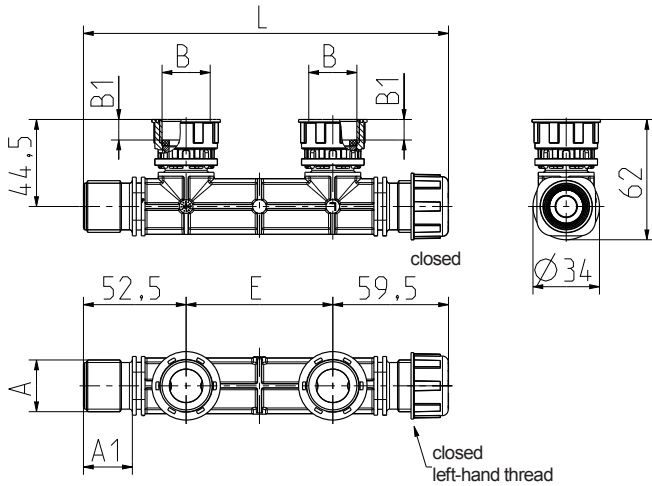
Pitch E	Valve Series	Note
36	1.010	One-chamber valve (without flange)
	1.013	One-chamber valve (without flange)
53	1.017	One-chamber valve (without flange)
75	1.010	1-, 2-, 3-, 4- chamber valve (with flange)
	1.013	1-, 2- chamber valve (with flange)
	1.017	One-chamber valve (with flange)
	1.021	One-chamber valve (with flange)





**CF-17 2MFC: Dual distribution, manifolds DNI7**

**ID**



**009368**

**Options**

Connection				Length		
Ø A	A1	Ø B	B1	E	L	ID
G 3/4 male	10,5	G 3/4 swivel nut	10,5	36	148	on request
				53	165	on request
				75	187	009368
.75-11.5 NH	10,5	.75-11.5 NH	10,5	36	148	on request
				53	165	on request
				75	187	on request

Depending on the pitch the manifolds are for example compatible to the following A. u. K. Müller servo-controlled valve series:

Pitch	Valve	
E	Series	Note
36	1.010	One-chamber valve (without flange)
	1.013	One-chamber valve (without flange)
53	1.017	One-chamber valve (without flange)
75	1.010	1-, 2-, 3-, 4- chamber valve (with flange)
	1.013	1-, 2- chamber valve (with flange)
	1.017	One-chamber valve (with flange)
	1.021	One-chamber valve (with flange)



CF-17 2MFO: Dual distribution, manifolds DN17	ID
	<p style="font-weight: bold; font-size: 1.2em;">009846</p>

Options						
Connection					Length	
Ø A	A1	Ø B	B1	E	L	ID
G 3/4 male	10,5	G 3/4 male	10,5	36	141	on request
				53	158	on request
				75	180	009846
.75-11.5 NH	10,5	.75-11.5 NH	10,5	36	141	on request
				53	158	on request
				75	180	on request

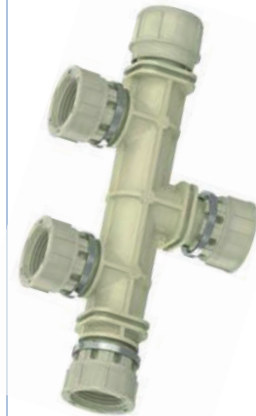
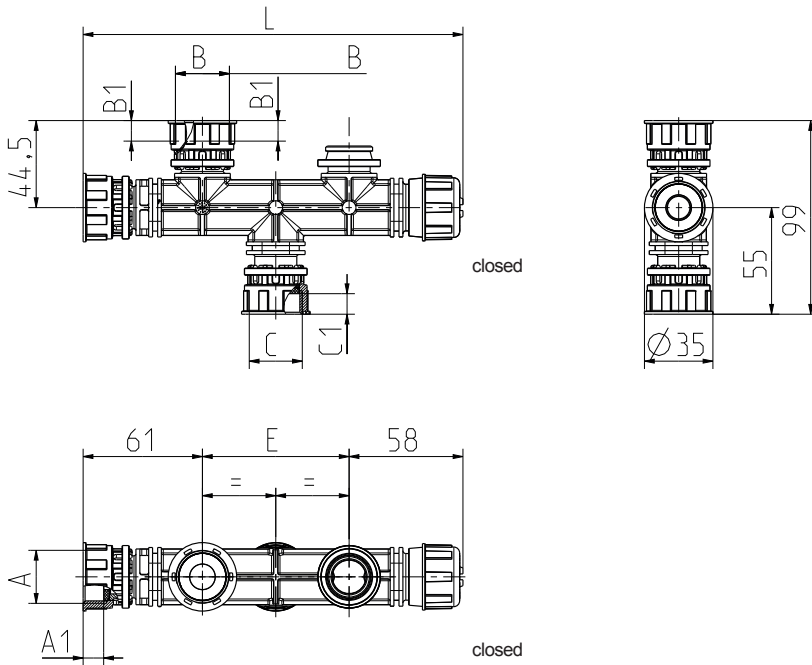
Depending on the pitch the manifolds are for example compatible to the following A. u. K. Müller servo-controlled valve series:

Pitch	Valve	
E	Series	Note
36	1.010	One-chamber valve (without flange)
	1.013	One-chamber valve (without flange)
53	1.017	One-chamber valve (without flange)
75	1.010	1-, 2-, 3-, 4- chamber valve (with flange)
	1.013	1-, 2- chamber valve (with flange)
	1.017	One-chamber valve (with flange)
	1.021	One-chamber valve (with flange)



**CF-17 3MFC: Triple distribution, manifolds DN17**

**ID**



**009371**

**Options**

Connection						Length		
Ø A	A1	Ø B	B1	Ø C	C1	E	L	ID
G 3/4 swivel nut	10,5	G 3/4 swivel nut	10,5	G 3/4 swivel nut	10,5	36	155	on request
						53	172	on request
						75	194	09371
.75-11.5 NH	10,5	.75-11.5 NH	10,5	.75-11.5 NH	10,5	36	155	on request
						53	172	on request
						75	194	on request

Depending on the pitch the manifolds are for example compatible to the following A. u. K. Müller servo-controlled valve series:

Pitch	Valve	
E	Series	Note
36	1.010	One-chamber valve (without flange)
	1.013	One-chamber valve (without flange)
53	1.017	One-chamber valve (without flange)
75	1.010	1-, 2-, 3-, 4- chamber valve (with flange)
	1.013	1-, 2- chamber valve (with flange)
	1.017	One-chamber valve (with flange)
	1.021	One-chamber valve (with flange)



CF-17 3MFC: Triple distribution, manifolds DN17	ID
	<p style="font-weight: bold; font-size: 1.2em;">009372</p>

Options								
Connection							Length	
Ø A	A1	Ø B	B1	Ø C	C1	E	L	ID
G 3/4 swivel nut	10,5	G 3/4 swivel nut	10,5	G 3/4 male	10,5	36	155	on request
						53	172	on request
						75	194	09372
.75-11.5 NH	10,5	.75-11.5 NH	10,5	.75-11.5 NH	10,5	36	155	on request
						53	172	on request
						75	194	on request

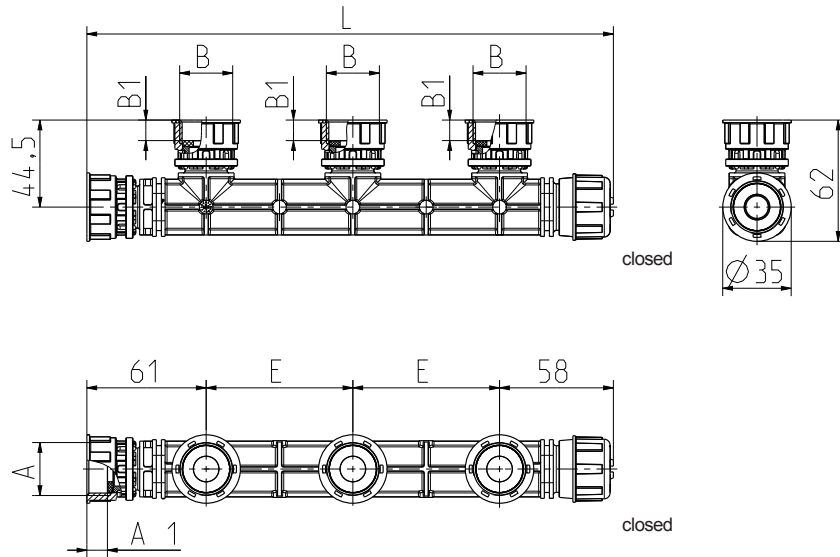
Depending on the pitch the manifolds are for example compatible to the following A. u. K. Müller servo-controlled valve series:

Pitch	Valve	
E	Series	Note
36	1.010	One-chamber valve (without flange)
	1.013	One-chamber valve (without flange)
53	1.017	One-chamber valve (without flange)
	1.010	1-, 2-, 3-, 4- chamber valve (with flange)
75	1.013	1-, 2- chamber valve (with flange)
	1.017	One-chamber valve (with flange)
	1.021	One-chamber valve (with flange)



**CF-17 3MFC: Triple distribution, manifolds DN17**

**ID**



**009369**

**Options**

Connection					Length	
Ø A	A1	Ø B	B1	E	L	ID
G 3/4 swivel nut	10,5	G 3/4 swivel nut	10,5	36	191	on request
				53	225	on request
				75	269	09369
.75-11.5 NH	10,5	.75-11.5 NH	10,5	36	191	on request
				53	225	on request
				75	269	on request

Depending on the pitch the manifolds are for example compatible to the following A. u. K. Müller servo-controlled valve series:

Pitch	Valve	
E	Series	Note
36	1.010	One-chamber valve (without flange)
	1.013	One-chamber valve (without flange)
53	1.017	One-chamber valve (without flange)
75	1.010	1-, 2-, 3-, 4- chamber valve (with flange)
	1.013	1-, 2- chamber valve (with flange)
	1.017	One-chamber valve (with flange)
	1.021	One-chamber valve (with flange)



CF-17 3MFC: Triple distribution, manifolds DN17	ID
	<p style="font-weight: bold; font-size: 1.2em;">009370</p>

Options						
Connection					Length	
Ø A	A1	Ø B	B1	E	L	ID
G 3/4 swivel nut	10,5	G 3/4 male	10,5	36	191	on request
				53	225	on request
				75	269	09370
.75-11.5 NH	10,5	.75-11.5 NH	10,5	36	191	on request
				53	225	on request
				75	269	on request

Depending on the pitch the manifolds are for example compatible to the following A. u. K. Müller servo-controlled valve series:

Pitch	Valve	
E	Series	Note
36	1.010	One-chamber valve (without flange)
	1.013	One-chamber valve (without flange)
53	1.017	One-chamber valve (without flange)
75	1.010	1-, 2-, 3-, 4- chamber valve (with flange)
	1.013	1-, 2- chamber valve (with flange)
	1.017	One-chamber valve (with flange)
	1.021	One-chamber valve (with flange)



## CF-H: Nozzles

Technical Data		
Type	Connector fitting	
Construction	Straight connector (0°) Elbow connector (90°)	
Fitting position	any	
Media	cold and heated potable water and physically and chemically similar media	
T-Medium	90 (194)	°C max. (°F max.)
T-Ambient	5 - 70 (41 - 158)	°C (°F)
p-Operating	0 - 10 (0 - 145)	bar (psi)
Strength	according to EN 61770	

Materials	
Swivel nut	PA 66 glass fibre reinforced
Spout and step reducer	PA 6/6 glass fibre reinforced
Seal	EPDM



The materials in contact with media have international drinking water approvals for hot potable water.



		Options				
	Inlet	Drawings and dimensions	Outlet		ID	
			Connection	inner diameter Ø		
CF-HS	G 3/4			1/2" Ø 14,5 mm	9	<b>009682</b>
CF-HS	G 3/4			1/2" Ø 14,5 mm	9	<b>009683</b>
CF-HS	G 3/4			1/2" Ø 14,5 mm	8	<b>009684</b>
CF-HS	G 3/4			3/8" Ø 11,5 mm	7	<b>009685</b>





		Options				
	Inlet	Drawings and dimensions	Outlet		ID	
			Connection	inner diameter Ø		
CF-HL	G 3/4			1/2" Ø 14,5 mm	10	<b>009686</b>
CF-HL	G 3/4			1/2" Ø 14,5 mm	10	<b>009687</b>
CF-HG	G 3/4			G 1/4 female	10	<b>009688</b> on request
CF-HG	G 3/4			G 1/8 female	10	<b>009689</b> on request



### CF-13: Manifolds DN 13

#### Technical Data

<b>Type</b>	Manifold, DN 13	
<b>Fitting position</b>	any	
<b>Media</b>	cold and heated potable water and physically and chemically similar media	
<b>T-Medium</b>	90 (194)	°C max. °F max.
<b>DN</b>	13	mm
<b>p-Operating</b>	0 - 10 (0 - 145)	bar (psi)
<b>Burst pressure</b>	65 (943)	bar (psi)



#### Materials

<b>Valve body</b>	PA 66 glass fibre reinforced
<b>Sealings</b>	EPDM

The materials in contact with media have international drinking water approvals for cold potable water as well as warm water (60 °C/ 140 °F) for the UK.





CF-13 2MFO, manifolds DN13	ID
	<p data-bbox="1380 651 1469 680">007912</p>

CF-13 2MFC, manifolds DN13	ID
	<p data-bbox="1380 1391 1469 1420">008121</p>



Options for G 3/4 male thread of CF-13, CF-17 components.

**Strainers**

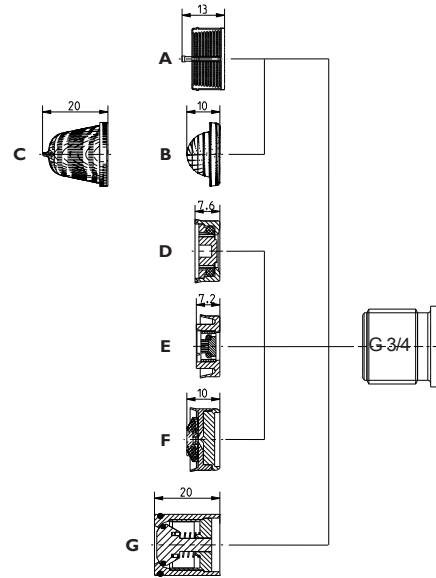
	Material	Meshsize [mm]	T-medium [°C]	ID
<b>A</b>	POM	0,45	65	000811
<b>B</b>	Stainless	0,25	90	005452
<b>C</b>	steel	0,50	90	003721

**Flow regulators**

	Material	Type	T-medium [°C]	Nominal flow rate from - to [l/min]
<b>D</b>	POM / EPDM	MR 04	65	5,0 - 20,0
<b>E</b>	POM / EPDM	MR 06	60	0,5 - 9,0
<b>F</b>	PEI / EPDM	MR 19	90	3,0 - 22,0

**Check valves**

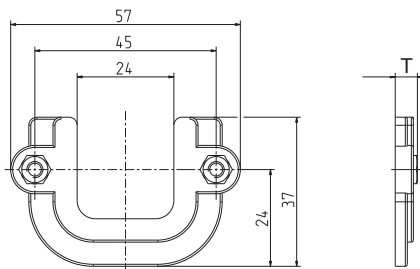
	Material	T-medium [°C]	ID
<b>G</b>	POM	65	005771



Please clarify the applicability and approvals of each aforementioned component with us.

**Flange as mounting support**

(Please see separate datasheet also)



ID	Depth
	T
001245	4,6
001246	5,5



# **technische import**

Nijverheidsweg 11  
7005 AS Doetinchem  
T. +31 (0) 314-344342  
E. [info@bafa.nl](mailto:info@bafa.nl)

**BAFA.NL**