



technische import

Produkt informatie



www.bafa.nl

Pressure switch 901 Prescal with adjustable setting

Application

Adjustable pressure switch monitoring overpressure, vacuum or differential pressure of liquid and gaseous – also aggressive – media.

The pressure switch uses a scaled adjustment knob to enable the adjustment of trip and reset pressure without the use of a screwdriver.

Temperature range

Ambient temperature from -20°C to 85°C .
Temperature of media from 85°C or 130°C depending on material of pressure connection and diaphragm.

Diaphragm material

Depending on media NBR, Silicone, FKM (Viton[®]), EPDM. For 901.8x Silicone, others upon request.

Electrical rating

Values indicated for resistive load

AgNi-contacts: 6 (1.5) A/250 VAC
2 A/24 VDC
Gold-plated contacts: 100 mA/24 VAC
30 mA/24 VDC

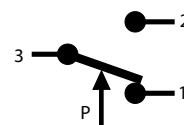
AgNi-contacts up to 10 A/250 VAC can be supplied upon request.

Electrical connection

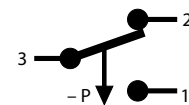
AMP connection 6.3 mm x 0.8 mm DIN 46244.

Arrangement of contacts

for 901.6x, 901.8x,
901.9x



only for 901.7x



CE Conformity

each depending on technical specification: Low Voltage Directive 2006/95/EC; RoHS Directive 2011/65/EC; ATEX-Directive 94/9/EC; Gas Appliance Directive 90/396/EC (only for Type 901.61 to 901.65 with brass pressure connection).

Life

Minimum 10^6 cycles.

Damping

Restrictors alternatively with 0.3/0.5/0.8 mm diameter.

Accessories

Various mounting brackets and protection caps with IP 44, IP 54 and IP 65.

Mounting position

Mounting in any position, to be specified for settings below 100 mbar.

Pressure connection

Type	Tube connection			Threaded connection			
	5.0 mm	6.5 mm	10.0 mm	M 10 x 1	G 1/8	G 1/4	G 1/2
901.61–65	PA	PA, PPS	PA, PPS	PA, PVDF CuZn40, V ₂ A	PA, PVDF CuZn40, V ₂ A	CuZn40, V ₂ A	CuZn40
901.66 – 68				CuZn40, V ₂ A	CuZn40, V ₂ A	CuZn40, V ₂ A	CuZn40
901.71–76	PA	PA, PPS	PA, PPS	PA, PVDF CuZn40, V ₂ A	PA, PVDF CuZn40, V ₂ A	CuZn40, V ₂ A	
901.77–78				CuZn40, V ₂ A	CuZn40, V ₂ A	CuZn40, V ₂ A	CuZn40
901.8x		PA					
901.91–93				CuZn40	CuZn40, V ₂ A	CuZn40, V ₂ A	

PA = polyamide, PVDF = polyvinylidene fluoride, PPS = polyphenylsulfide, CuZn40 = brass, V₂A = stainless steel

For temperature above 85°C metal or PPS pressure connection is required. Upon request pressure connections of other sizes, other plastics or brass nickel-plated are available.

Viton[®] is a registered trademark of DuPont Dow Elastomers.

Prescal[®] is a registered trademark of Beck GmbH Druckkontrolltechnik.



Overpressure range

Type	Adjustment range for trip pressure		Tolerance band in % of	Switching differential	Maximum positive working pressure		Maximum negative working pressure	
	from	to			standard/ extended	standard/ extended		
901.61	5	20 mbar	± 10 %	3 mbar	0.5/4 bar	-/-1 bar		
901.62	10	50 mbar	± 10 %	5 mbar	0.5/4 bar	-/-1 bar		
901.63	25	100 mbar	± 10 %	10 mbar	0.5/4 bar	-/-1 bar		
901.64	50	250 mbar	± 10 %	20 mbar	1/4 bar	-/-1 bar		
901.65	100	500 mbar	± 10 %	50 mbar	1/4 bar	-/-1 bar		
901.66	250	1.000 mbar	± 10 %	150 mbar	10 bar	-1 bar		
901.67	500	1.500 mbar	± 10 %	250 mbar	10 bar	-1 bar		
901.68	1.000	3.000 mbar	± 10 %	500 mbar	10 bar	-1 bar		
901.91	1.0	6.0 bar	± 10 %	0.5 – 2.0 bar	25 bar	-1 bar		
901.92	4.0	9.0 bar	± 10 %	0.5 – 2.0 bar	25 bar	-1 bar		
901.93	7.0	12.0 bar	± 10 %	0.5 – 2.0 bar	25 bar	-1 bar		

Vacuum range

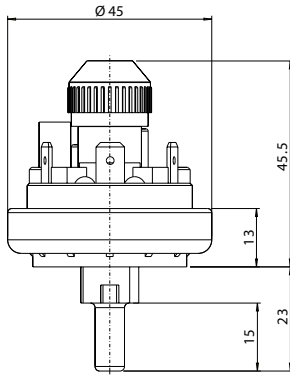
901.71	- 5	- 20 mbar	± 10 %	3 mbar	0.5/4 bar	-1 bar
901.72	- 10	- 50 mbar	± 10 %	5 mbar	0.5/4 bar	-1 bar
901.73	- 25	- 100 mbar	± 10 %	10 mbar	0.5/4 bar	-1 bar
901.74	- 50	- 125 mbar	± 10 %	20 mbar	0.5/4 bar	-1 bar
901.75	- 75	- 200 mbar	± 10 %	25 mbar	1/4 bar	-1 bar
901.76	- 100	- 300 mbar	± 10 %	30 mbar	1/4 bar	-1 bar
901.77	- 200	- 500 mbar	± 10 %	75 mbar	1/4 bar	-1 bar
901.78	- 300	- 700 mbar	± 10 %	75 mbar	1/4 bar	-1 bar

Differential pressure range

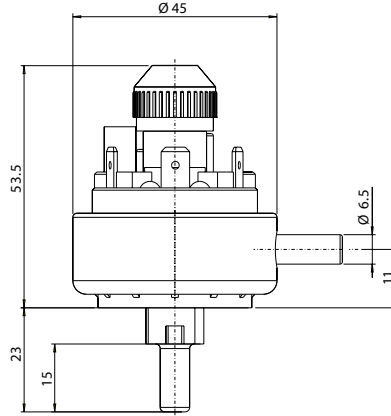
901.81	5	20 mbar	± 10 %	3 mbar	100 mbar	-100 mbar
901.82	10	50 mbar	± 10 %	5 mbar	100 mbar	-100 mbar

Pressure switch 901 Prescal with adjustable setting

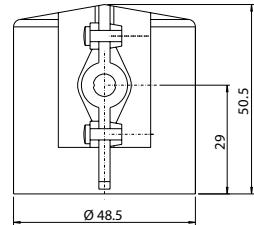
901.6x/7x



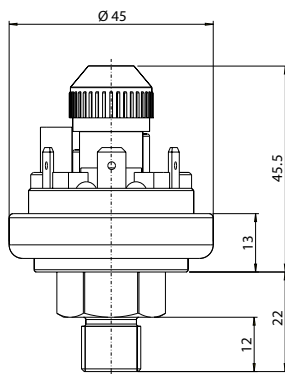
901.8x



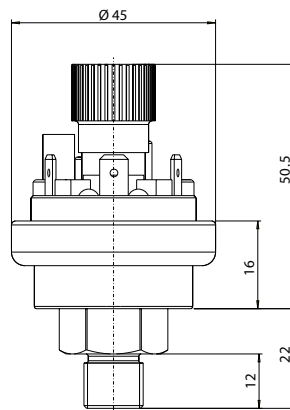
Protection caps
6329 IP 44



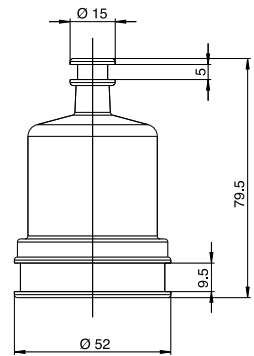
901.6x/7x



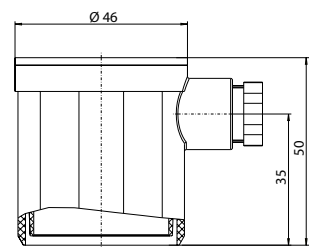
901.9x



6365 IP 54



6371 IP 54/6372 IP 65

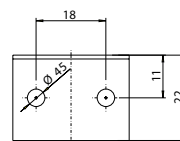
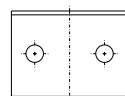
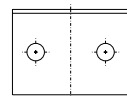
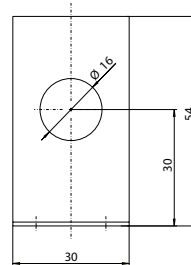
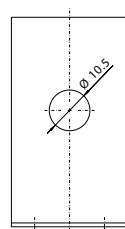
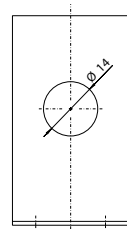
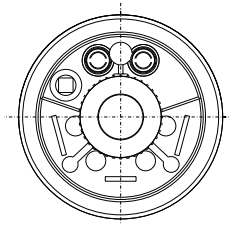


Mounting brackets

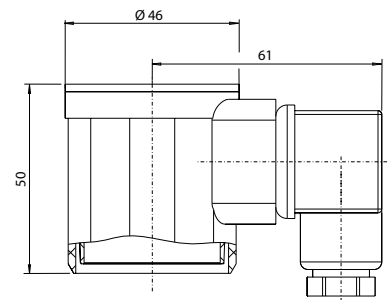
6403

6404

6405

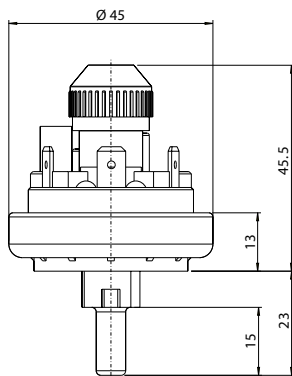


6374 IP 54/6375 IP 65

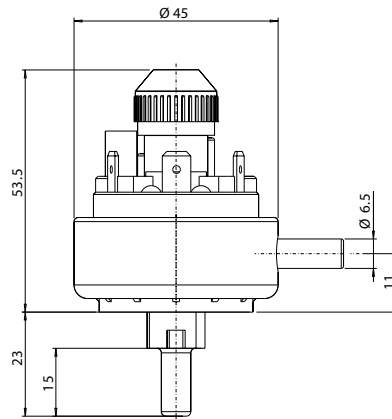


Druckwächter 901 Prescal mit einstellbarem Schaltdruck

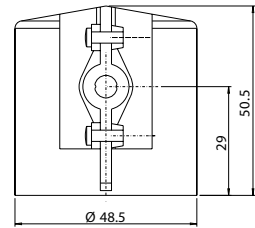
901.6x/7x



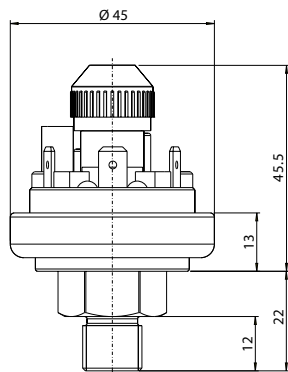
901.8x



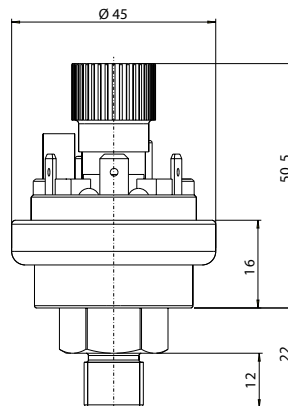
Schutzkappen
6329 IP 44



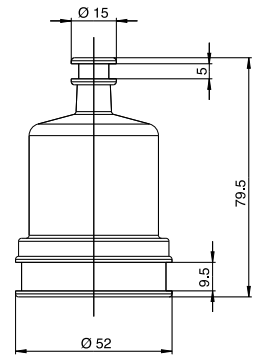
901.6x/7x



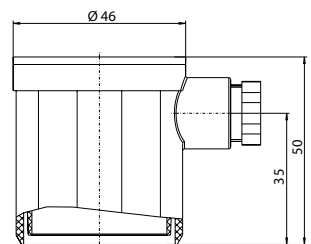
901.9x



6365 IP 54



6371 IP 54 / 6372 IP 65

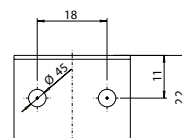
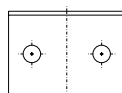
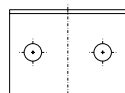
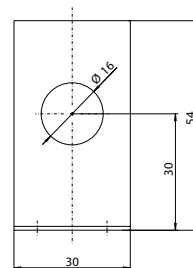
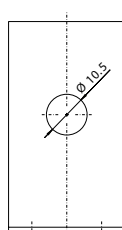
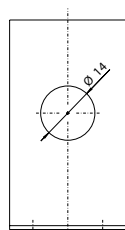
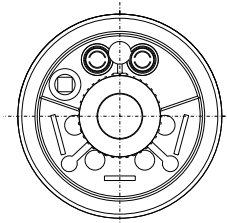


Befestigungswinkel

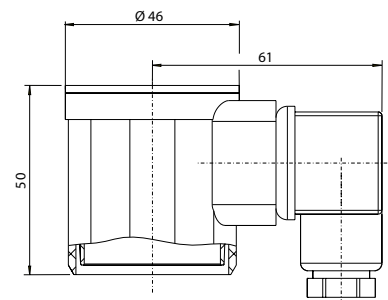
6403

6404

6405



6374 IP 54 / 6375 IP 65



Anwendungen

Einstellbarer Druckwächter zur Überwachung des Über-, Unter- oder Differenzdrucks bei flüssigen und gasförmigen – auch aggressiven – Medien.

Der Druckwächter verfügt über einen Einstellknopf, um eine Einstellung des Schaltdrucks ohne Schraubendreher zu ermöglichen.

Temperaturbereich

Umgebungstemperatur von -20°C bis 85°C .
Mediumtemperatur bis 85°C oder 130°C je nach Material des Druckanschlusses und der Membran.

Membranwerkstoffe

Abhängig vom Medium NBR, Silikon, FKM (Viton[®]), EPDM.
Für 901.8x Silikon, andere auf Anfrage.

Elektrische Schaltleistung

Angabe der Höchstwerte bei ohmscher Belastung

AgNi-Kontakte: 6 (1,5) A/250 VAC
2 A/24 VDC

Vergoldete Kontakte: 100 mA/24 VAC
30 mA/24 VDC

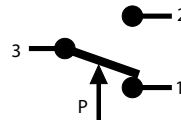
Auf Anfrage können auch AgNi-Kontakte bis 10 A/250 VAC geliefert werden.

Elektrische Anschlüsse

AMP Flachstecker 6,3 mm x 0,8 mm nach DIN 46244.

Kontaktanordnung

für 901.6x, 901.8x,
901.9x



nur für 901.7x



CE Konformität

jeweils abhängig von technischer Ausführung: Niederspannungsrichtlinie 2006/95/EC; RoHS-Richtlinie 2011/65/EC; ATEX-Richtlinie 94/9/EC; Gasgeräte-Richtlinie 90/396/EC (nur für Typ 901.61 bis 901.65 mit Messingdruckanschluss).

Lebensdauer

Mindestens 10^6 Schaltspiele.

Dämpfung

Dämpfungsdüsen wahlweise mit 0,3/0,5/0,8 mm Durchmesser.

Zubehör

Verschiedene Befestigungswinkel und Schutzkappen mit IP 44, IP 54 und IP 65.

Einbaulage

Einbau in beliebiger Lage, bei Schaltpunkten unter 100 mbar jedoch anzugeben.

Druckanschlüsse

Typ	Schlauchstutzen			Gewindestutzen			
	5,0 mm	6,5 mm	10,0 mm	M 10x1	G 1/8	G 1/4	G 1/2
901.61–65	PA	PA, PPS	PA, PPS	PA, PVDF CuZn40, V ₂ A	PA, PVDF CuZn40, V ₂ A	CuZn40, V ₂ A	CuZn40
901.66–68				CuZn40, V ₂ A	CuZn40, V ₂ A	CuZn40, V ₂ A	CuZn40
901.71–76	PA	PA, PPS	PA, PPS	PA, PVDF CuZn40, V ₂ A	PA, PVDF CuZn40, V ₂ A	CuZn40, V ₂ A	
901.77–78				CuZn40, V ₂ A	CuZn40, V ₂ A	CuZn40, V ₂ A	CuZn40
901.8x		PA					
901.91–93				CuZn40	CuZn40, V ₂ A	CuZn40, V ₂ A	

PA = Polyamid, PVDF = Polyvinylidendifluorid, PPS = Polyphenylensulfid, CuZn40 = Messing, V₂A = Edelstahl

Für Temperaturbereiche über 85°C muss ein metallischer Druckanschluss oder PPS gewählt werden. Auf Anfrage kann der Druckanschluss auch in anderen Größen sowie aus Messing vernickelt und anderen Kunststoffen geliefert werden.

Viton[®] ist ein eingetragenes Warenzeichen der DuPont Dow Elastomers.
Prescal[®] ist ein eingetragenes Warenzeichen der Beck GmbH Druckkontrolltechnik.



Überdruckbereich

Typ	Einstellbereich für oberen Schaltdruck		Genauigkeit der Richtwertskala	Schaltdifferenz	Maximal zulässiger Betriebsüberdruck Standard/ erhöht	Maximal zulässiger Betriebsunterdruck Standard/ erhöht
	von	bis				
901.61	5	20 mbar	± 10 %	3 mbar	0,5/4 bar	-/-1 bar
901.62	10	50 mbar	± 10 %	5 mbar	0,5/4 bar	-/-1 bar
901.63	25	100 mbar	± 10 %	10 mbar	0,5/4 bar	-/-1 bar
901.64	50	250 mbar	± 10 %	20 mbar	1/4 bar	-/-1 bar
901.65	100	500 mbar	± 10 %	50 mbar	1/4 bar	-/-1 bar
901.66	250	1.000 mbar	± 10 %	150 mbar	10 bar	-1 bar
901.67	500	1.500 mbar	± 10 %	250 mbar	10 bar	-1 bar
901.68	1.000	3.000 mbar	± 10 %	500 mbar	10 bar	-1 bar
901.91	1,0	6,0 bar	± 10 %	0,5 – 2,0 bar	25 bar	-1 bar
901.92	4,0	9,0 bar	± 10 %	0,5 – 2,0 bar	25 bar	-1 bar
901.93	7,0	12,0 bar	± 10 %	0,5 – 2,0 bar	25 bar	-1 bar

Unterdruckbereich

901.71	-5	-20 mbar	± 10 %	3 mbar	0,5/4 bar	-1 bar
901.72	-10	-50 mbar	± 10 %	5 mbar	0,5/4 bar	-1 bar
901.73	-25	-100 mbar	± 10 %	10 mbar	0,5/4 bar	-1 bar
901.74	-50	-125 mbar	± 10 %	20 mbar	0,5/4 bar	-1 bar
901.75	-75	-200 mbar	± 10 %	25 mbar	1/4 bar	-1 bar
901.76	-100	-300 mbar	± 10 %	30 mbar	1/4 bar	-1 bar
901.77	-200	-500 mbar	± 10 %	75 mbar	1/4 bar	-1 bar
901.78	-300	-700 mbar	± 10 %	75 mbar	1/4 bar	-1 bar

Differenzdruckbereich

901.81	5	20 mbar	± 10 %	3 mbar	100 mbar	-100 mbar
901.82	10	50 mbar	± 10 %	5 mbar	100 mbar	-100 mbar



technische import

T: +31 (0)314 344 342

E: INFO@BAFA.NL