



**technische import**

# Produkt informatie



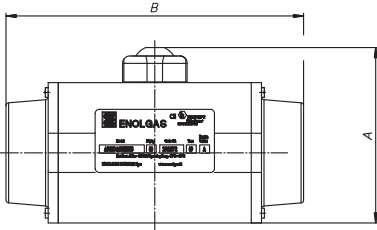
**ENOLGAS**



ENOLGAS

# Enolgas the trust of 50 years of experience.

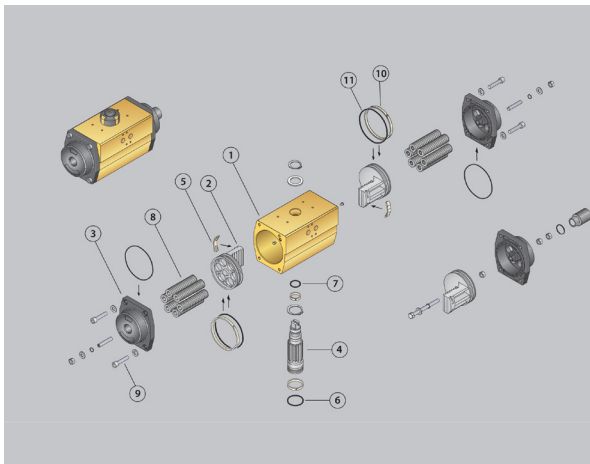
*For more than 50 years Enolgas has been synonymous with reliability, quality and safety. It has always been a point of reference for qualified customers who are careful to protect, through their choices, the value of 100% Made in Italy products.*



## ALUMINIUM "DA" PNEUMATIC ACTUATOR

The Enolgas Rack & Pinion aluminium pneumatic actuators are suitable for use in civil and industrial automation. They are available in both single and double acting version, in various dimensions and with different executions, with bores connection in accordance with ISO 5211 standard. Actuators are CE marked and Ped and Atex certified.

## MATERIALS SPECIFICATIONS ALUMINIUM PNEUMATIC "DA" ACTUATOR S2951:



1	Body	Extruded	Aluminium Alloy
2	Piston	Casted	Aluminium Alloy
3	End-Cap	Casted	Extruded
4	Pinion	From bar	Carbon Steel
5	Piston guide	From bar	Carbon Steel
6	Lower Pinion guide ring	From bar	Acetal resin
7	O-ring	Moulded	Nitrile rubber
8	Springs	Forged	Acciaio per molle
9	Screw end cap	from bard	Stainless steel
10	Piston guide ring	From bar	Acetal resin
11	O-ring	Forged	Nitrile rubber

### PNEUMATIC ACTUATOR

Rack and Pinion aluminium pneumatic actuator with hard anodized external surface.

### END CONNECTIONS

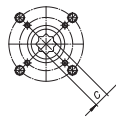
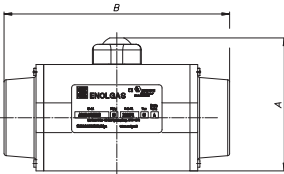
Bottom drilling to match valve is in accordance with ISO 5211. Interface for solenoid valve, shaft top end and top drilling to assemble accessories are in accordance with VDI/VDE 3845, NAMUR.

### INLET PRESSURE RANGE

From 2 bar to 8 bar double acting.  
From 3 bar to 8 bar single acting.

### TEMPERATURE LIMITS

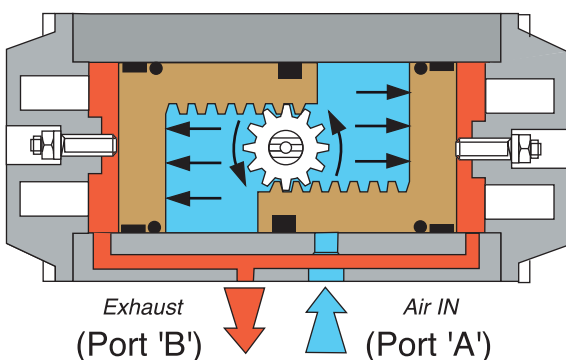
From -20°C to +80°C.



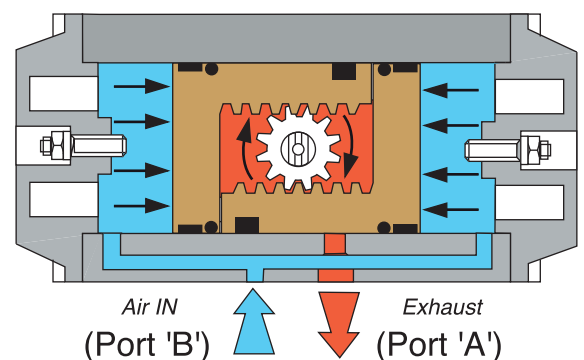
Code	S2951X06	S2951X15	S2951X20	S2951X40	S2951X50	S2951X55	S2951X70	S2951X75	S2951X80	S2951X85	S2951X90
A mm	87	103	120	130	145	172	185	206	230	300	385
B mm	142	155	213	236	276	310	366	388	468	563	750
C mm	9	11	14	17	17	22	22	27	27	36	46
FLANGIA	F03-F05	F04-F05	F05-F07	F07	F07-F10	F10	F10	F12	F12	F14	F16

## OUTPUT ALUMINIUM "DA" PNEUMATIC ACTUATOR

COUNTER CLOCKWISE OUTPUT ROTATION



CLOCKWISE OUTPUT ROTATION





ENOLGAS

## OPERATING PRESSURE (BAR) ALUMINIUM “DA” PNEUMATIC ACTUATOR

Model	2 bar	3 bar	4 bar	5 bar	6 bar	7 bar	8 bar
S2951X06	5.9	8.9	11.8	14.8	17.7	21.7	24.8
S2951X15	9.4	14.1	18.8	23.5	28.2	32.9	37.6
S2951X20	20	30	40	50	60	70	80
S2951X40	34	51	68	85	102	119	136
S2951X50	48	71	95	119	142	168	192
S2951X55	87	130.8	174.4	218	261.6	305.2	348.8
S2951X70	111	167	222	278	333	388.5	444
S2951X75	157.6	236.4	315.3	394.1	473	551.8	630.6
S2951X80	227	340	454	567	680	794.5	908
S2951X85	426	638	851	1064	1276	1491	1704
S2951X90	1078	1617	2156	2695	3234	3773	4312

### Double acting actuators' (DA) dimensioning

To dimension an actuator it is necessary to know the requested torque and the air pressure available at the actuator entrance. The requested torque is given by the declared bre-

king torque increased by a suitable safety factor. Then on the dimensioning table please check which actuator corresponds to the requested working conditions, by crossing the pressure values and the requested torque ones.

### Safety factor

The safety factor is given by the medium going through the valve, its temperature, density and viscosity. The safety factor is moreover determined by the medium's state of aggregation,

if it has lubricant features, if it contains materials which can deposit or get stuck inside the valve.



**technische import**