



technische import

Productinformatie



FRATELLI PETTINAROLI

BAFA.NL



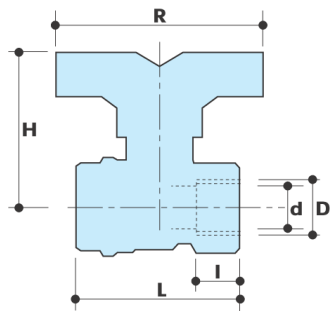
DESCRIPTION

52CE

F x F extra compact fullway ball valve.
Red butterfly handle.

Conform to **EN 13828**

DIMENSIONS



D	1/2"	3/4"	1"	1 1/4"
d	15	20	25	32
H	46	55.5	56	71
l	12	13	14	16.5
L	47.4	58	68	81
R	58	65	65	75
Accessory type	1	2	2	3
Weight (g)	160	280	430	750

All threads are conform to ISO 7/1 or ISO 228 standards

MATERIALS

Body	Brass CW617N (DIN 50930 part.6) CuZn40Pb2
Ball	Brass CW617N (DIN 50930 part.6) CuZn40Pb2 Chrome plated
Stem	Brass CW614N (DIN 50930 part.6) CuZn39Pb3
Gland	Brass CW614N (DIN 50930 part.6) CuZn39Pb3
Seat	2 x PTFE
O-rings	2 x FKM
Lever	Aluminum butterfly handle

CONNECTION VARIANTS

52CE	F X F, red butterfly handle
52CE/1	F X M, red butterfly handle
52CE/2	M X M, red butterfly handle

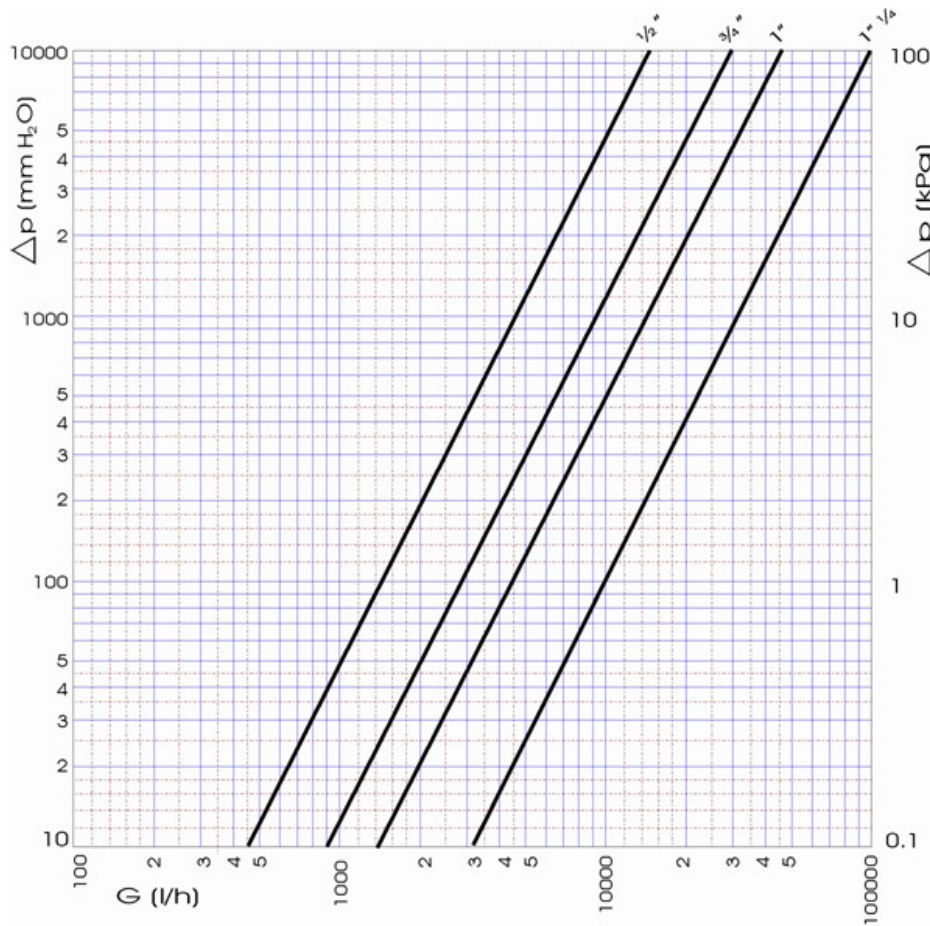
HANDLE VARIANTS

50CE	red aluminum lever
51CE	red steel lever
52CE	red butterfly handle
52CET	extended plastic lever

APPROVALS

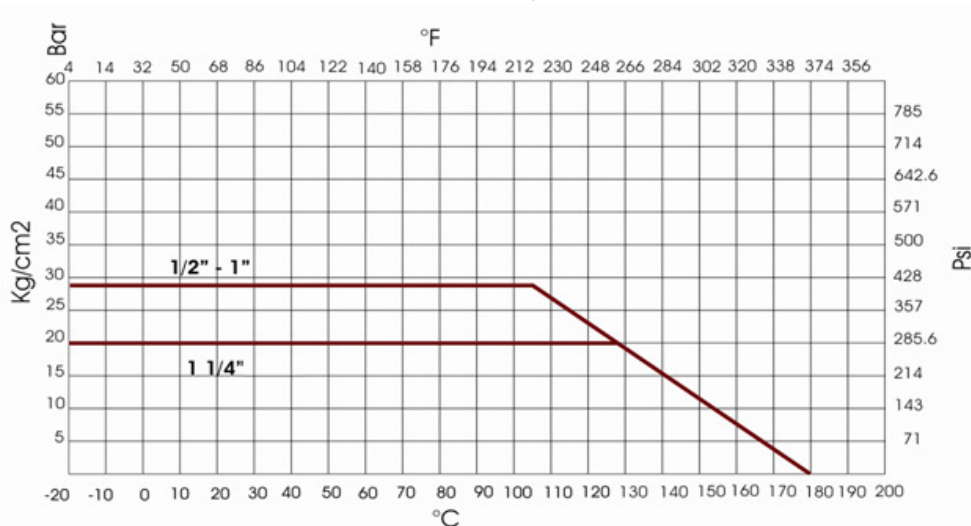


PRESSURE DROP DIAGRAM



Dim.	1/2"	3/4"	1"	1.1/4"
Kv	14.5	30	45	97
PN	28	28	28	20

RECOMMENDED WORKING TEMPERATURE/ PRESSURE LIMIT



28 bar - 100°C - non shock (1/2" - 1")

10 bar - 150°C - non shock



technische import

Nijverheidsweg 11
7005 AS Doetinchem
T. +31 (0)314-344342
E. info@bafa.nl

BAFA.NL