



technische import

Productinformatie



FRATELLI PETTINAROLI

BAFA.NL



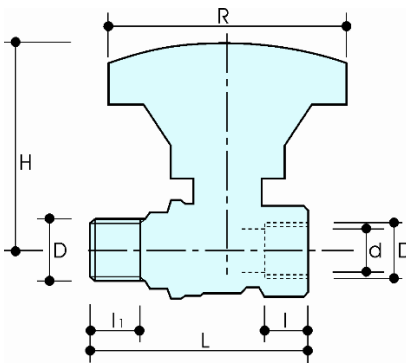
DESCRIPTION

53/1

F x M heavy duty full-flow ball valve with reducer (gear handle).

Conform to **EN 13828**

DIMENSIONS



D	1/4"	3/8"	1/2"	3/4"	1"	1 1/4"	1 1/2"	2"
d	10	10	15	20	25	32	40	50
H	63	63	66	72	78	83	114	121
I	11.5	12	17	18	21.5	23.5	23.5	28
I1	11.5	12	17	18	21.5	23.5	23.5	28
L	56	57.5	70	79	93.5	106	117	138.5
R	70	70	70	70	70	70	110	110
Weight [g]	200	190	240	380	660	1030	1420	2100

Dimensions in **mm**

All threads are conform to ISO 7 or ISO 228 standards

MATERIALS

Body	CW617N (DIN 50930 part.6) CuZn40Pb2
Ball	CW617N (DIN 50930 part.6) CuZn40Pb2 Diamond polished and chrome plated
Stem	CW614N (DIN 50930 part.6) CuZn39Pb3
Stuffing box	CW614N (DIN 50930 part.6) CuZn39Pb3
Seat	2 x PTFE
O-Rings	2 x FKM Viton®
Lever	Nylon fiber

APPROVALS

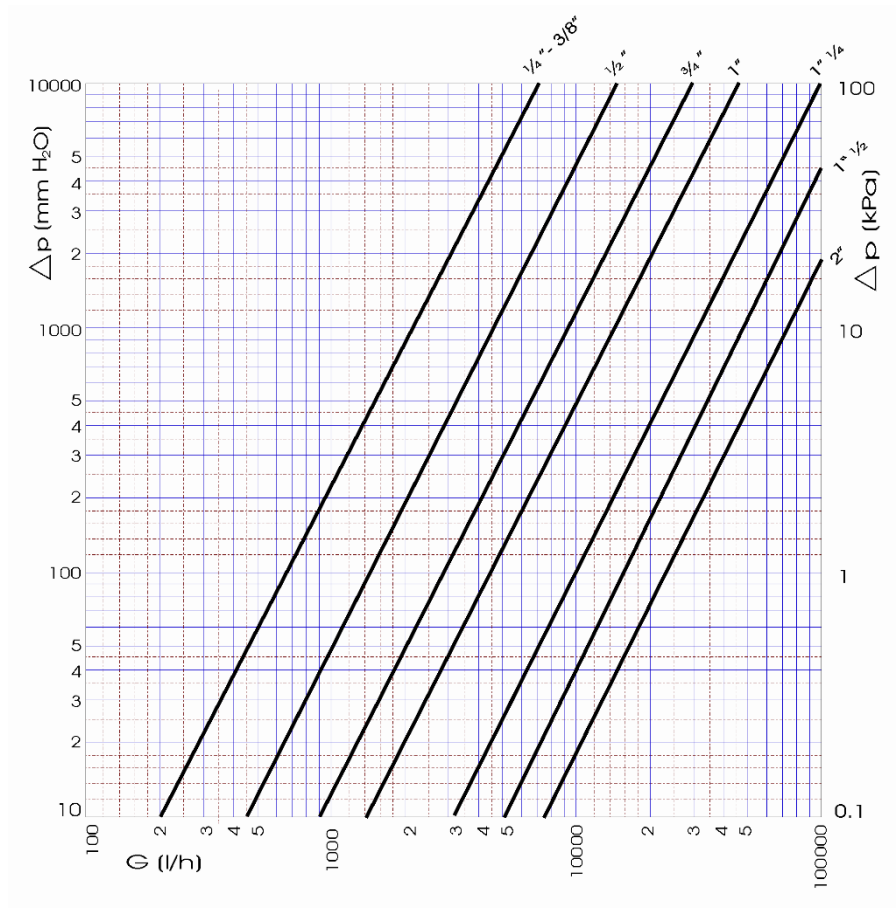


RECOMMENDED WORKING TEMPERATURE/PRESSURE LIMITS

30 bar – 100°C – non shock

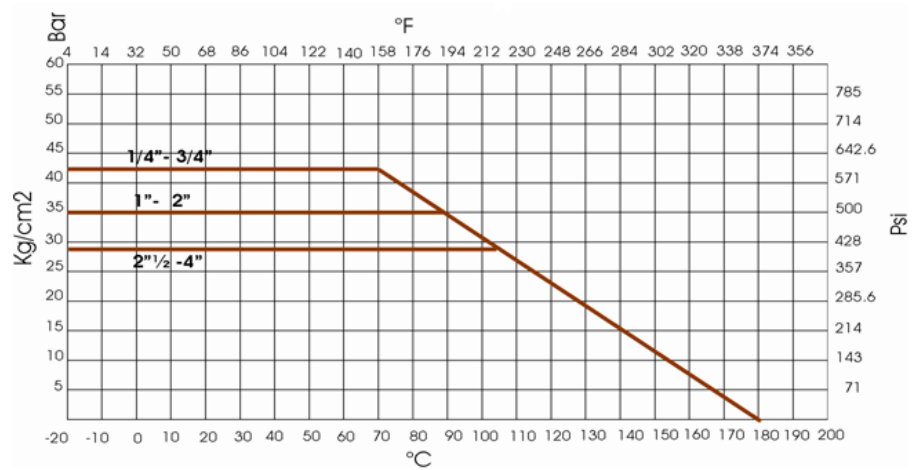
10 bar – 150°C – non shock

PRESSURE DROP DIAGRAM



Dim.	1/4"	3/8"	1/2"	3/4"	1"	1 1/4"	1 1/2"	2"
Kv	6.6	6.7	14.5	30	45	97	150	220
PN	42	42	42	42	35	35	35	35

TEMPERATURE / PRESSURE DIAGRAM





technische import

Nijverheidsweg 11
7005 AS Doetinchem
T. +31 (0)314-344342
E. info@bafa.nl

BAFA.NL